



Working Paper Series

**Modelling the overall personal income
distribution in the USA from 1994 to 2002**

Ivan O. Kitov

ECINEQ WP 2005 – 07

Modelling the overall personal income distribution in the USA from 1994 to 2002

Ivan O. Kitov*

Russian Academy of Sciences

Abstract

Numerical modelling of the personal income distribution (PID) in the USA from 1950 to 2003 is accomplished based on a microeconomic model for the personal income evolution. It is shown that the overall PID demonstrates the existence of some fixed hierarchical income distribution structure in the USA. The PIDs normalized to the total population and corrected for the per capita nominal GDP growth coincide for years from 1994 to 2002. The observed inflation plays a role of some specific mechanism returning the PIDs to the initial shape. The structure of the PID is accurately simulated by using a microeconomic model with some simple assumptions related to the distribution of capabilities to earn money and sizes of earning means – two measurable parameters introduced in the model. The evolution of the overall PID is also well predicted depending on nominal GDP growth from 1994 to 2002.

KEYWORDS: personal income distribution, mean income, microeconomic modeling, USA, real GDP, macroeconomics

JEL Classification: D01, D31, E17, J1, O12

* **Contact details:** VIC, P.O. Box 1250, Vienna 1400, Austria; email - ikitov@mail.ru

Introduction

This paper is devoted to the numerical modelling of the personal income distribution in the USA from 1950 to 2003. Kitov (2005b) has formally introduced a microeconomic model for the personal income evolution depending on economic growth. Personal income distribution (PID) is one of the key economic parameters. The history of the income measurements in the USA started in 1948 when the first Annual Social and Economic Supplement, ASEC, (former Annual Demographic Survey, ADS, or March Supplement) to the Current Population Survey (CPS) included a question about the income (The U.S. Census Bureau 1996). Tables of income by detailed socioeconomic characteristics published by the US census Bureau (2004a) span the time interval from 1994 to 2003. The tables include information on the number of people with income in narrow intervals of \$2500 starting from zero income and current losses up to a highest income of \$100,000. They also provide mean incomes in five years intervals of age groups, except for the youngest group, which spans the time interval from 15 to 24 years of age. Thus, detailed data on personal income are available for the last 10 years and the aggregated data are available for a longer period of 35 years - from 1967 to 2001. The aggregated data sets are used in the following papers.

An important issue for the analysis conducted below is accuracy of the income measurements. There are two principal sources of inaccurate measurement - sampling error and non-sampling error as presented by the US Census Bureau (2002). The first is related to the difference between the CPS sample and the complete coverage of the population. Statistical accuracy of this type of error can be estimated and included into analysis. The second includes all

other potential sources of error including undercoverage, definition difficulties, variations in interpretation of questions, etc. The U.S. Census Bureau constantly improves accuracy of the personal income measurements. This process includes extension of the number of interviewed households, covering some specific groups such as Hispanic origin, etc. The last major change in the procedure occurred in 2002, when the total number of the surveyed units became 99,000. Between 1994 and 2001 there were 60,000 units in the basic CPS and additional 21,000 units for the March Survey, i.e. 81,000 in total. These changes make it sometimes difficult to compare income data sets obtained in different years.

Despite some shortcomings in the personal income data set, this represents the longest, and the most detailed and accurate source of income information for any numerical analysis.

1. Personal income distribution in the USA

The personal income distributions for years from 1994 to 2002 are displayed in Figure 1. The number of people with income inside original \$2500 wide intervals is merged in wider intervals of \$10,000. The distributions show an increasing number of people with income above \$20,000 and a decreasing number below this value. This is an expected result of population growth, real economic growth and inflation. The first of the three processes potentially leads to the upward displacement of the curves as a whole if the population added every year is distributed over income in the same way as before. The US population grows approximately by 1% yearly due to excess of births over deaths, and positive migration.

The latter two processes, however, result in the distribution curve change. Inflation observed in the USA last ten years was between 1.2% in 1998 and 2.4% in 2001. The effect of inflation results in receipt of a higher nominal income. Because subsequent years provide population counts in the same income bins, one can expect that people in lower income bins would eventually migrate in higher income bins. Moreover, the people in the highest routinely counted income bins, eventually, migrate to the zone above the highest limit of the survey, i.e. above \$100,000. Thus, more and more people were outside the published detailed counting. This effect, apparently, forced the Census Bureau to introduce some new income intervals for higher incomes after 2000. These intervals, however, are \$50,000 wide, i.e. twenty times wider than the standard intervals. The observed effect of the inflation is a decreasing population in lower income bins and an increasing population in higher income bins. This is exactly what one observes in Figure 1.

The real economic growth leads to the effect similar to that caused by inflation. More goods and services produced by the economy result in an increase in the total income, which by definition is GDP (GDP=GDI). People earn more and migrate with time to higher income bins. In some rare years of the economy contraction, incomes drop and people fall back into lower income bins.

The aggregate effect of the three processes described above divide the distribution into two zones – less than the mean income and above the mean income, as seen in Figure 1. The mean income increases from \$23,278 in 1994 to \$32,222 in 2002 (in current dollars). So, the turning point between the two zones is somewhere between these values.

One can present the original PIDs in some normalized form. A natural normalization is according to the total population. This representation avoids population change effects and allows for the population density distribution. As shown below, this distribution better characterizes a hierarchy of the personal income distribution in a developed economy. Figure 2 illustrates evolution of the population density distribution as a function of income.

A series of corrections has been applied to the original PID. Information on real and nominal GDP growth and total population change in the USA is used to reduce the distributions to that of the 1994 PID. A well-known procedure of the reduction is the adjustment for inflation. Because the March Supplement of the CPS gives numbers of people with incomes in bins of \$2500, one has to correct the distribution for changing dollar value, which represents the scale contraction caused by the inflation. For example, in order to correct for 10 per cent inflation, one has to compress the scale by 1.1. In this case, the bin between \$50,000 and \$52,500 transforms into the bin from \$45,450 to \$47,727, with the center shifted from \$51,125 to \$46,588. Comparison of the starting year distribution, the PID for 1994 in this case, and the subsequent years' distributions corrected for the inflation reveals the change of the real PID. Figure 3 displays results of the correction for inflation during time period from 1994 to 2002 applied to the population density distribution. Evolution of the distributions shows an increase of relative number of people with higher real incomes. This observation is consistent with the observed real economic growth during the studied period of time. Due to very weak real GDP growth in 2001, the curve for 2000 is very close to that for 2002. One can observe the scale contraction resulted from the corrections described above - the centers of the measurement intervals monotonically drift to the zero point with time.

The same correction procedure has been applied to changes of nominal and real economic growth, both absolute and per capita. In the case of zero population change and inflation, a

correction for the real economic growth could potentially reveal changes in distribution of the total personal income among the same people. This type of correction is similar to that of correction of the density distribution for per capita nominal GDP growth. The density distribution is not affected by the population changes and the correction for the nominal GDP growth effectively compensates for the inflation effect. Figures 4 and 5 compare effects of a correction for the nominal GDP growth on the original personal income distribution and a correction for the nominal per capita GDP growth on the density income distribution. This correction addresses the question of redistribution of the extra income generated by inflation and real economic growth among the increasing population. Are the extra money distributed evenly over the income groups or some selected groups obtain more from the redistribution?

The personal income distributions in Figure 4 are almost parallel. This indicates that potentially only population growth forces the 1994 curve to move upwards. Because the curves are parallel, relative increase of population in every income bin is the same, and the personal income distribution among the newcomers is exactly the same as among the experienced people. In other words, the hierarchy in the PID is rigid over time and generations. This principal conclusion of the paragraph is even better illustrated by Figure 5 where the population density curves for the studied years coincide.

Hence, one can interpret inflation as a mechanism compensating the distortion of the PID caused by the real economic growth. The observed inflation rate is exactly equal to the rate needed to return the PID density distribution to its original shape. In other words, inflation eats out of the poor people advantages obtained from the economic growth.

2. Modelling the overall personal income distribution

Using the model described in Kitov (2005b), we start the personal income modelling with some theoretical examples. The initial model is constrained so as to reproduce the real observations, but only general details are important at this stage. The model is characterized by a number of external and internal parameters. The external parameters include GDP growth rate: real and nominal, total and per capita and population distribution - total and single year of age. The internal parameters of the model are the initial critical work experience, $T_{cr}(0)$, and the initial dissipation factor, α . The former internal parameter can be obtained from the observations and the latter only from some calibration process.

GDP growth rates during the period from 1950 to 2002 are presented in table 1. The total increase of the nominal and real GDP is 35.7 and 5.7, respectively. The per capita GDP corrected for population above 15 years has changed by factors 17.5 and 2.5, respectively. The latter value indicates that the real GDP growth per a person of age above 15 changed only by 2.5 times during the 52 years after 1950. It is 2.28 less than the total change of real GDP. Actual economic development is not as fast as seems from some economic news.

Thus, the observed growth of the real GDP is half due to the population growth or extensive factors. Figure 6 illustrates single year population estimates for some selected calendar years as obtained from the U.S. Census Bureau (2004b). Total population in the USA grows eventually from 152,200,000 in 1950 to 286,200,000 in 2001. Total population of age above 15 grew during the same period from 111,300,000 to 225,670,000. The relative share of a given single year age population also changes in time. Figure 7 depicts the same population distributions normalized to the corresponding peak year for a single year population. The age of the largest population evolves in time and is currently 45 years. Populations peaked at this age provides the highest share of population with almost the highest attained income. In other words, the current population conditions in the USA correspond to a very effective one case for income earning. When the peak surpasses the critical time, T_{cr} (also growing in time), in several years from now, the conditions will deteriorate eventually, but not severely. There will be only 10% drop of the relative share of the population with the peak income in next 15 years. The next five years, however, are favorable. The Figures demonstrate also the importance of the single year population distribution for the model. Variations of population counts within the 10 year age groups used by the U.S. Census Bureau for averaging of income readings can cause substantial variations in estimates, especially in the youngest age group, where the personal income increases exponentially. Fortunately, the single year population estimates are available from 1950, with a varying accuracy, however. We estimate the accuracy of the estimates for a single year of age as 5% to 7%. In wider intervals, the accuracy is higher and may be of 1% to 2%.

In the model, the population of every single year of age for every calendar year is divided by $29^2=841$. The resulting value represents a share of population with the same income evolution history, because only 841 different combinations of SL are available. One should keep in mind that combinations ($S=2, L=30$) and ($S=30, L=2$) are quite different due to the fact that the means size L defines the time constant of dissipation. People in each of the 841 groups have the same income

equal to the product of the current GDP level relative to the start point of the calculations and time dependent function $(1 - \exp(-\alpha T/L))$, where T is the work experience of the particular age group. For example, the age group of 50 year-olds has the work experience of 35 years. L is the value of the real earning means' size in the group relative to the initial value. Actually, there are as many age groups as listed in the tables of the U.S. Census Bureau. The model includes only the age groups from 15 to 75 years. This age interval is used in the calculations of the average income covering the time period from 1967 to 2001. This limitation affects, however, the modelling of the overall personal income distribution because not all the people counted by the Census Bureau are counted in the model.

The internal parameters T_{cr} and α depend on time. We have conducted a series of calculations for various time intervals between 1950 and 2002. The best estimates for the year 1950 are $T_{cr}=23.5$ years and $\alpha=0.097$, respectively. These values can be reduced to any year other than 1950 by using the per capita real GDP growth (see Table 1).

Figure 8 presents some examples of the overall PID for the years of 1980, 1990, and 2002. Evolution of the PID reproduces some principal features of the observed distributions: a drop of population density level at lower incomes, and an increase of population density at higher income. The point where the two processes compensate each other is situated between \$20K and \$30K. The curves are obtained from corresponding dimensionless curves scaled with a factor of 70000. This means that 1 unit of the dimensionless scale costs \$70,000 for the year of 1980. The scaling factor evolves in time with the per capita nominal GDP growth. In the year 2002, the scaling factor is about 105,000 and the theoretical personal income distribution in current dollars extends to \$103,000.

Figures 9 through 11 compare the observed and predicted distributions for the years 1994, 1998, and 2001. The observed distributions in \$10K wide intervals are interpolated by splines in order to get a continuous distribution. The predicted distributions are obtained from a model with the following parameters: start year = 1960, $T_{cr}(1960)=26.5$, $\alpha=0.087$. Because the calculation are carried out in current dollars, the initial value of the Pareto threshold is equal to 0.43 and develops in time as the per capita nominal GDP growth in order to obtain the number of people in the current dollar bins. The conversion factor between dimensionless units of the model and current dollars in the year of 1960 is 10,500. This means that the whole 1960 theoretical PID can be placed into \$10,500 income range, and the whole 1980 PID spans from \$0 to \$40,000 because the per capita

nominal GDP grew by 3.8 times from 1960 to 1980. There are no people in the highest income groups of the theoretical distribution, however, because none reached 100% of their potential income during the period of income growth.

The PID for the year 1994 is presented in Figure 9. The predicted distribution coincides with the observed one in the range between \$5K and \$35K. The latter value is very close to the Pareto threshold situated between \$35K and \$45K. Beginning from the Pareto threshold the distributions diverge because of different character of decay described in the model (see Kitov (2005) for details). The observed distribution drops with income by a power law. The predicted distribution decays slowly just above the threshold, but then the rate of the decay grows very fast and it intercepts the observed distribution somewhere near the \$60K income point. Since the scale is semi-logarithmic, the curves apparent divergence is higher than the actual one on a linear scale.

Figures 10 and 11 illustrate the development of the distributions and corresponding Pareto threshold. The threshold moves towards the higher limit of the income range with time. It was somewhere around \$45K in 1998, and near \$55K in 2001. Because the Pareto threshold quickly moves to the \$100,000 mark as a result of the observed intensive economic growth in the USA, one can expect that the distribution in the range from \$0 to \$100,000 will not contain the Pareto distributed portion of the overall distribution and will not correctly represent the personal income distribution. Even now the distribution contains only a narrow range where the power law reigns.

The predicted and observed PID describing the population between 15 and 75 years of age are consistent. These distributions, however, are less sensitive to the model parameters than other fine characteristic described in the following paper.

3. Discussion and conclusion

The above analysis of the overall PID demonstrates the existence of some fixed hierarchical structure of the personal income distribution in the USA. The PIDs normalized to the total population above 15 years of age and corrected for the per capita nominal GDP growth coincide for years from 1994 to 2002. Thus, the observed inflation plays a role of some specific mechanism returning the PIDs to the initial shape when disturbed by the real economic growth.

The structure of the personal income distribution can be simulated by using the microeconomic model presented in Kitov (2005b) with some simple assumptions related to the distribution of capabilities to earn money and sizes of earning means. In the lower income zone, the

observed and predicted distributions coincide up to an income interpreted as the Pareto distribution threshold or the minimum possible income in the Pareto distribution. The Pareto part of the actual PID is considered to be a result of the self-organized criticality and does not need any additional modelling except the prediction of the portion of the total population in the Pareto zone. This portion of the total population is of about 10 per cent and its distribution over work experience is also exactly predicted by the microeconomic model (Kitov 2005a).

The evolution of the overall PID is also well predicted depending on nominal GDP growth from 1994 to 2002. This includes the prediction of the subcritical zone width and relevant change of the PID slope with time. One can easily predict the future PIDs as a function of GDP growth and population changes.

On the other hand, the observed accurate prediction of the US PIDs for years between 1994 and 2002 demonstrates validity of the microeconomic model and general concept inherently related to the personal income as the only source of the economic growth. More support for the model is expected in further papers addressing some fine features of the PIDs for the same years from 1994 to 2002 and aggregated income measures available for a longer interval starting in 1967.

Acknowledgements

The author is grateful to Dr. Wayne Richardson for his constant interest in this study, help and assistance, and fruitful discussions. The manuscript was greatly improved by his critical review.

References

Kitov, I.O. (2005a) "Evolution of the personal income distribution in the USA: High incomes", paper accepted for presentation at the first meeting of the Society for the Study of Economic Inequality (ECINEQ), Palma de Mallorca, July 20-22, 2005

Kitov, I.O. (2005b) "A model for microeconomic and macroeconomic development", (in preparation)

U.S. Bureau of Economic Analysis (2005) "Current-Dollar and "Real" Gross Domestic Product", Table, Last modified 05.26.05. <http://bea.gov/bea/dn/gdplev.xls>

U.S. Census Bureau (1996) "CPS Help-Census/DSD/CPSB", Last modified: May 22, 1996; <http://www.bls.census.gov/cps/ads/shistory.htm>

U.S. Census Bureau (2004a) "Detailed Income Tabulations from the CPS". Tables, Last Revised: August 26 2004; <http://www.census.gov/hhes/income/dinctabs.html>

U.S. Census Bureau (2002) "Source and Accuracy of the Data for the March 2002 CPS" http://www.bls.census.gov/cps/ads/2002/S&A_02.pdf

U.S. Census Bureau (2004b) "Population Estimates; Age", Tables, Last Revised: 4-December-2004 03:44:43 p.m.; <http://www.census.gov/popest/age.html>

Figures

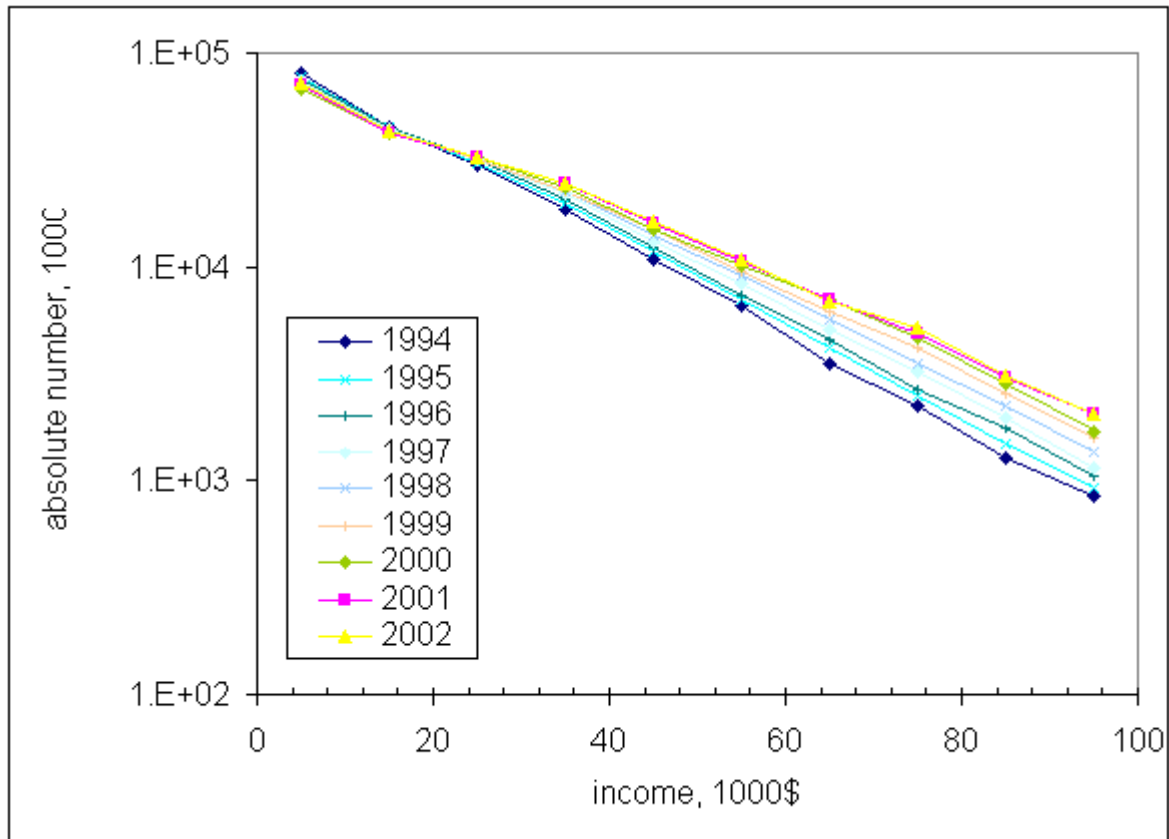


Fig.1. Personal income (current dollars) distributions in the USA from 1994 to 2002. Odd years are skipped for the sake of clarity. Absolute number (thousands) of people with income in \$10K bins (includes current losses) are shown.

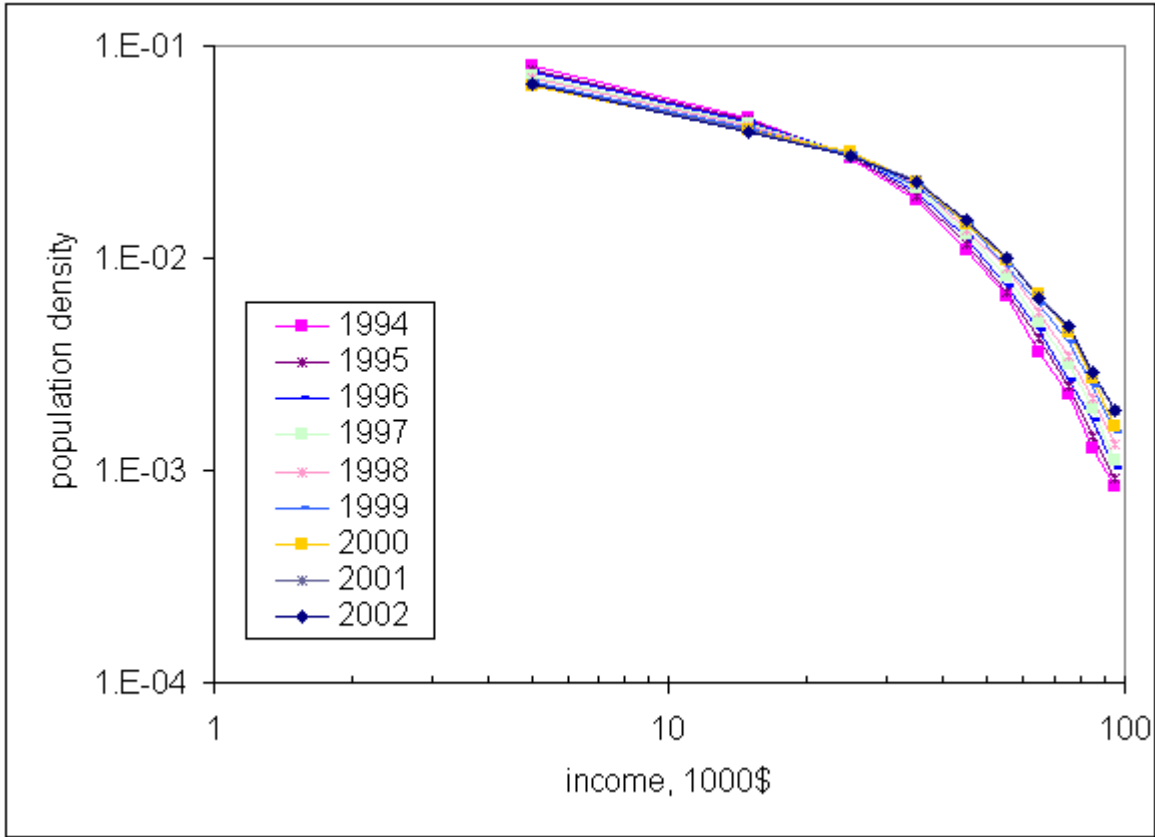


Fig.2. Personal income distributions shown in Fig.1 divided by the corresponding midyear population.

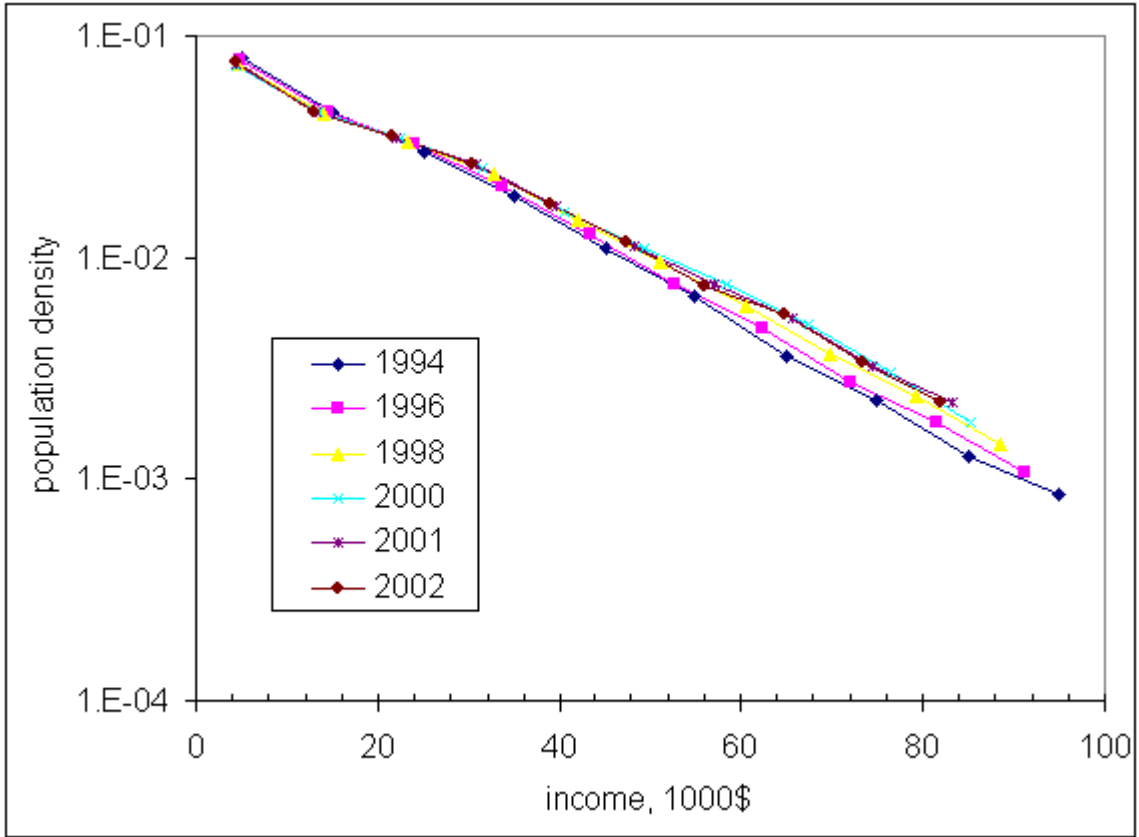


Fig.3. Population density vs. income shown in Fig. 1 adjusted for the measured inflation in the USA

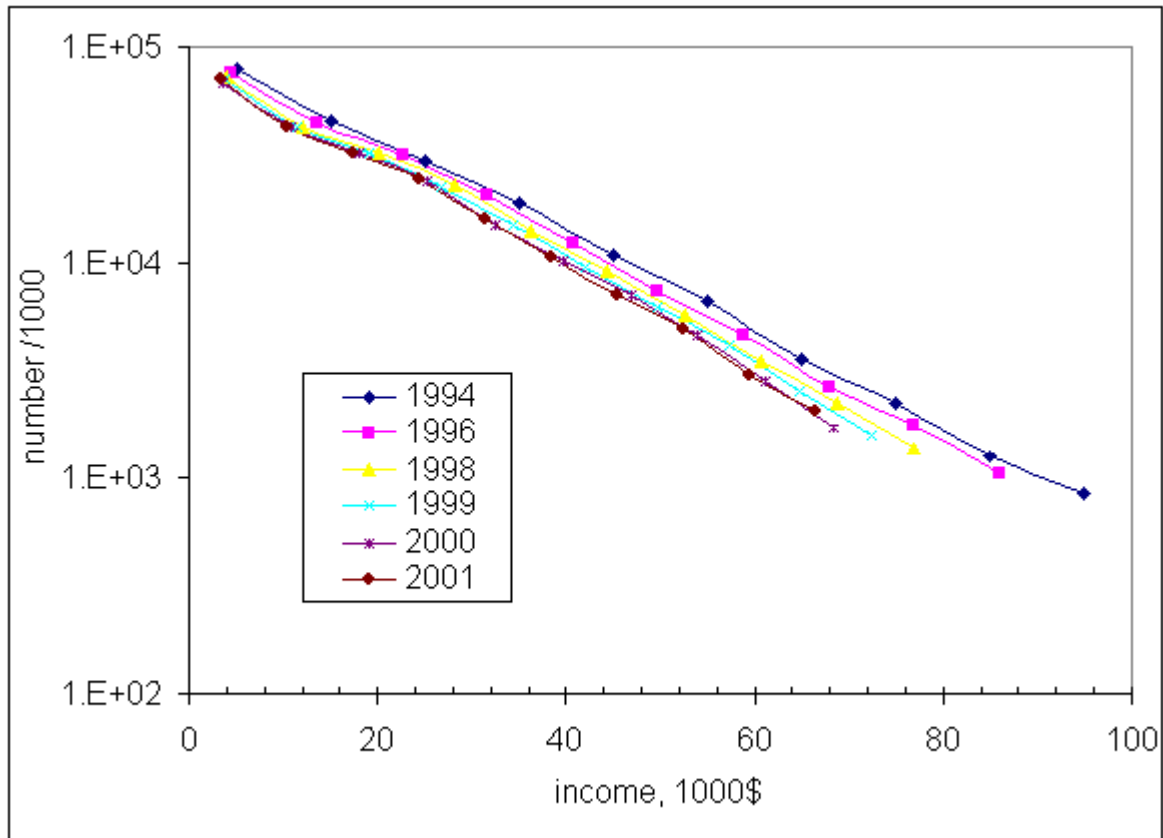


Fig.4. Personal income distribution shown in Fig. 1 adjusted for the measured nominal GDP growth.

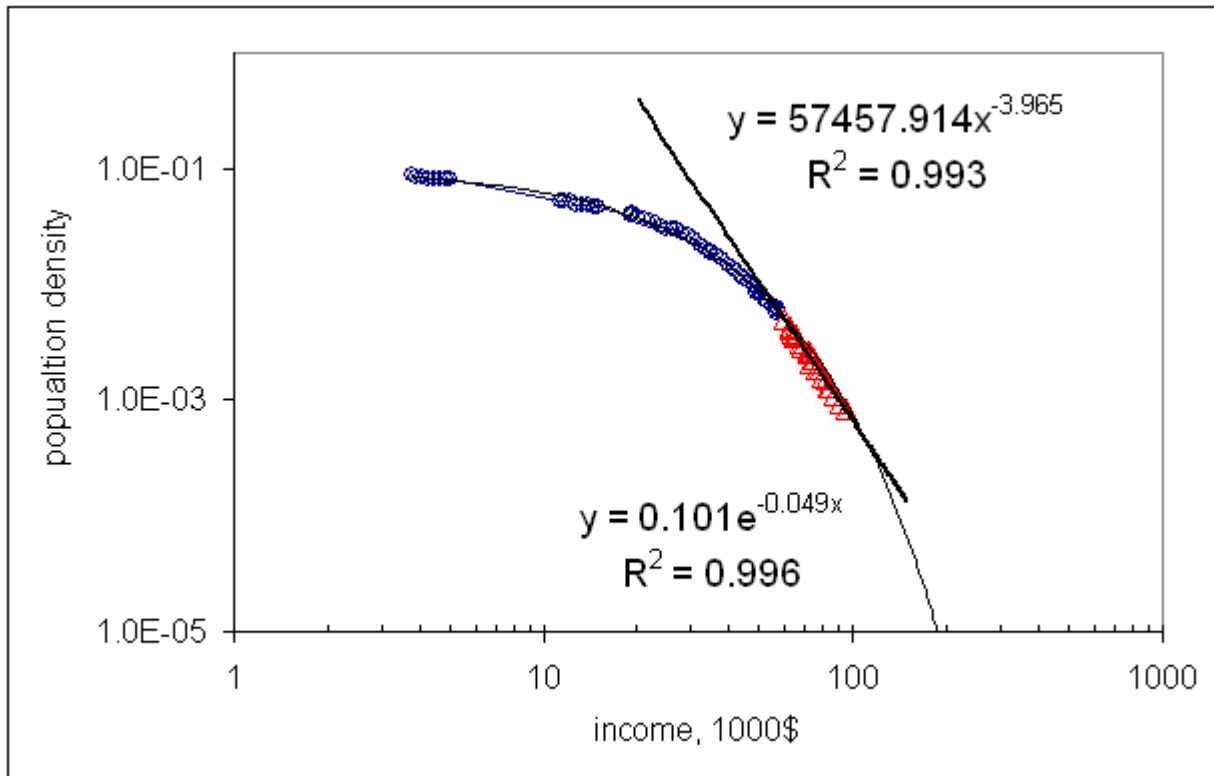


Fig.5. Population density vs. income adjusted for the measured per capita nominal GDP growth. Exponential and power law branches are distinguished and corresponding trend lines are shown.

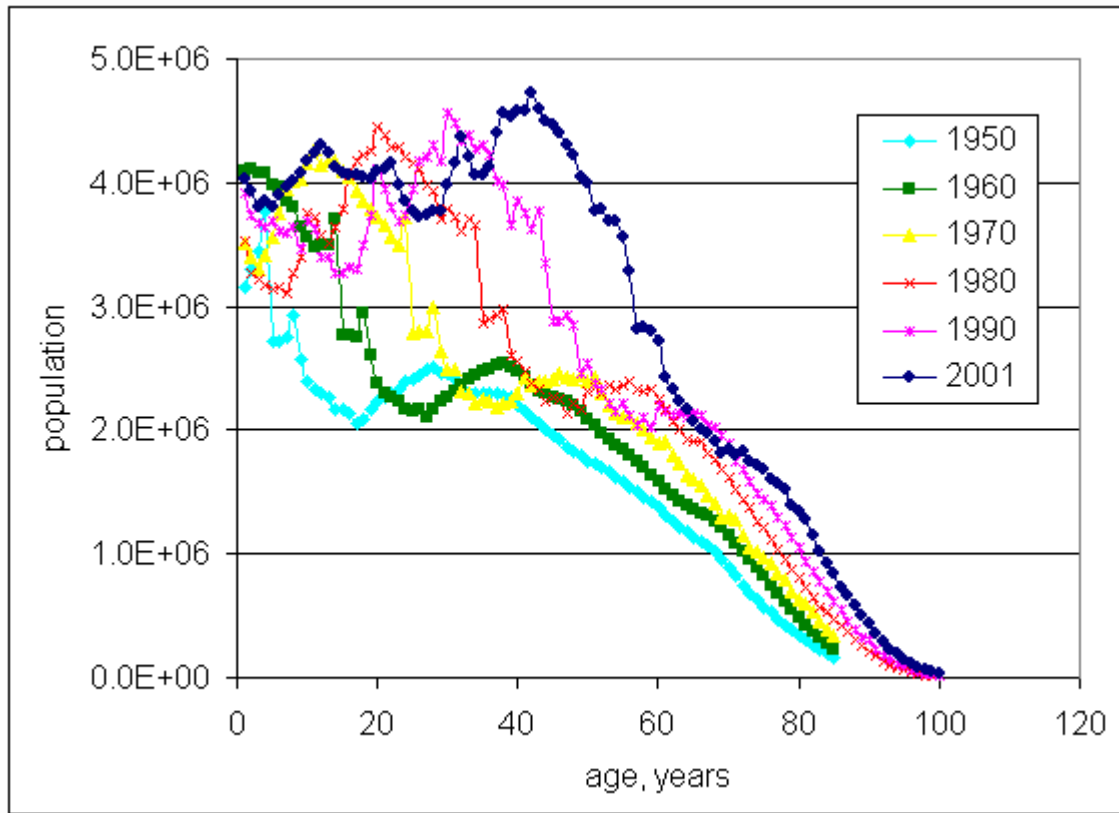


Fig.6. Population estimates for the calendar years of 1950, 1960, 1970, 1980, 1990, and 2001 (The US Census Bureau (2004b)).

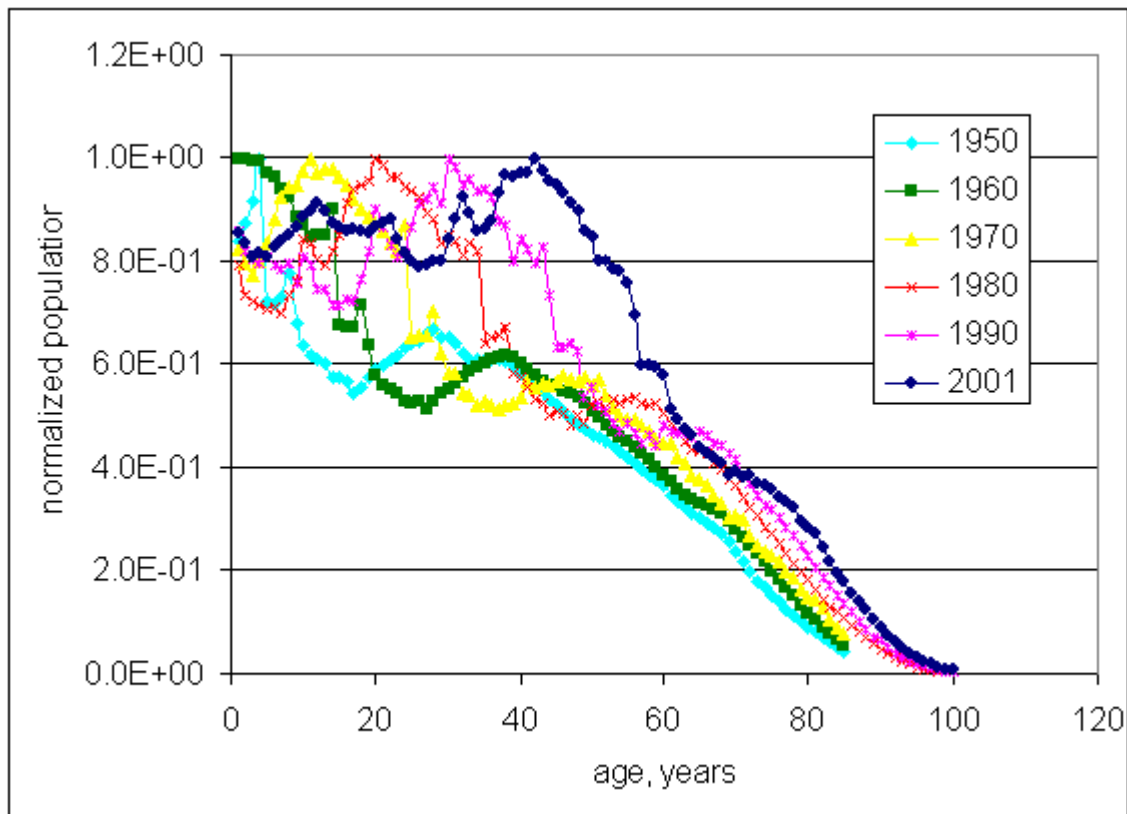


Fig. 7. Normalized population estimates for the calendar years of 1950, 1960, 1970, 1980, 1990, and 2001.

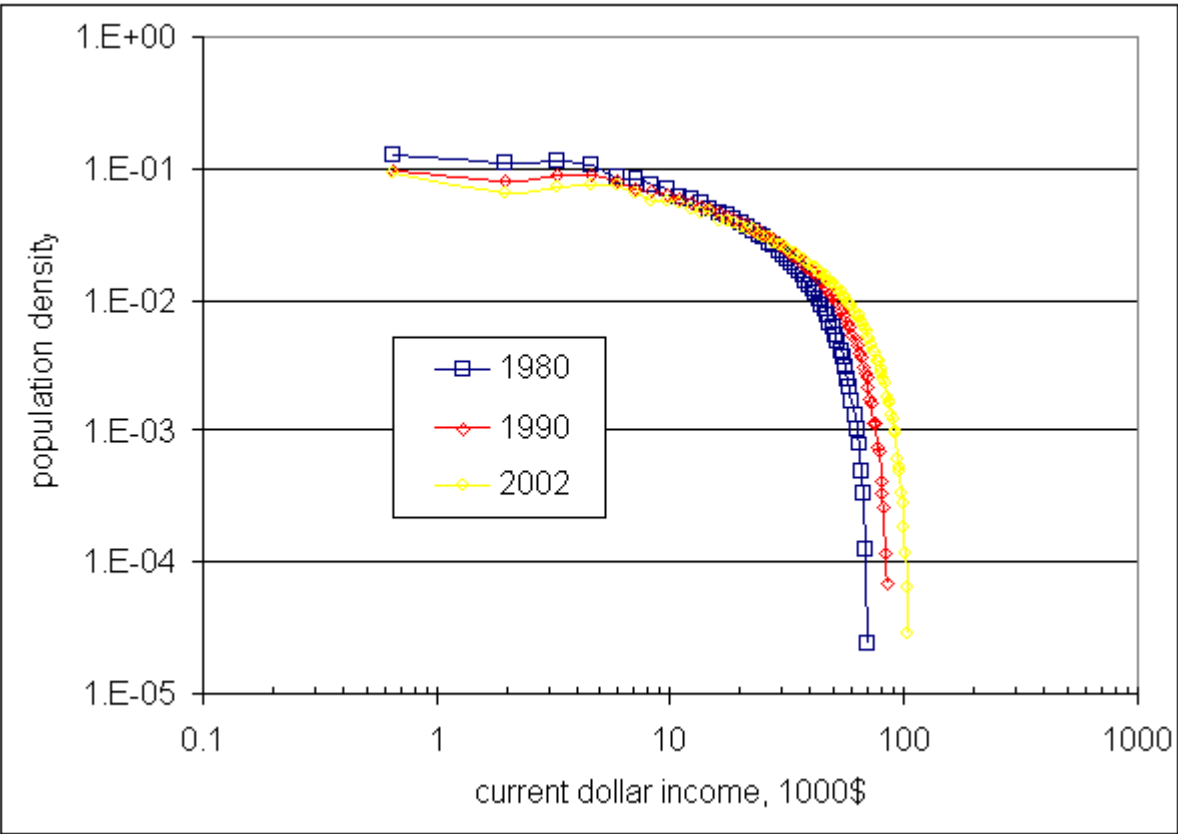


Fig. 8. Predicted evolution of the personal income distribution for the years between 1980 and 2002.

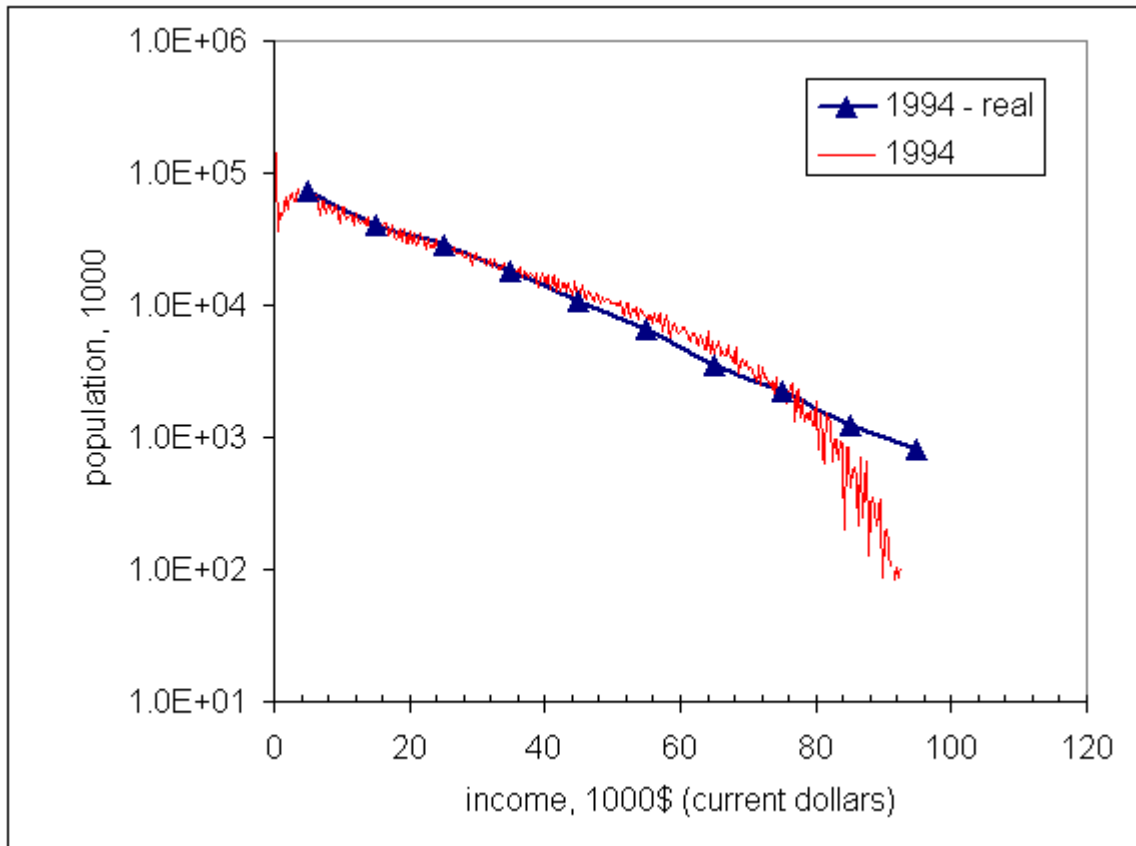


Fig. 9. Comparison of the predicted and observed personal income distributions for the year 1994. The Pareto threshold is between \$35K and \$45K.

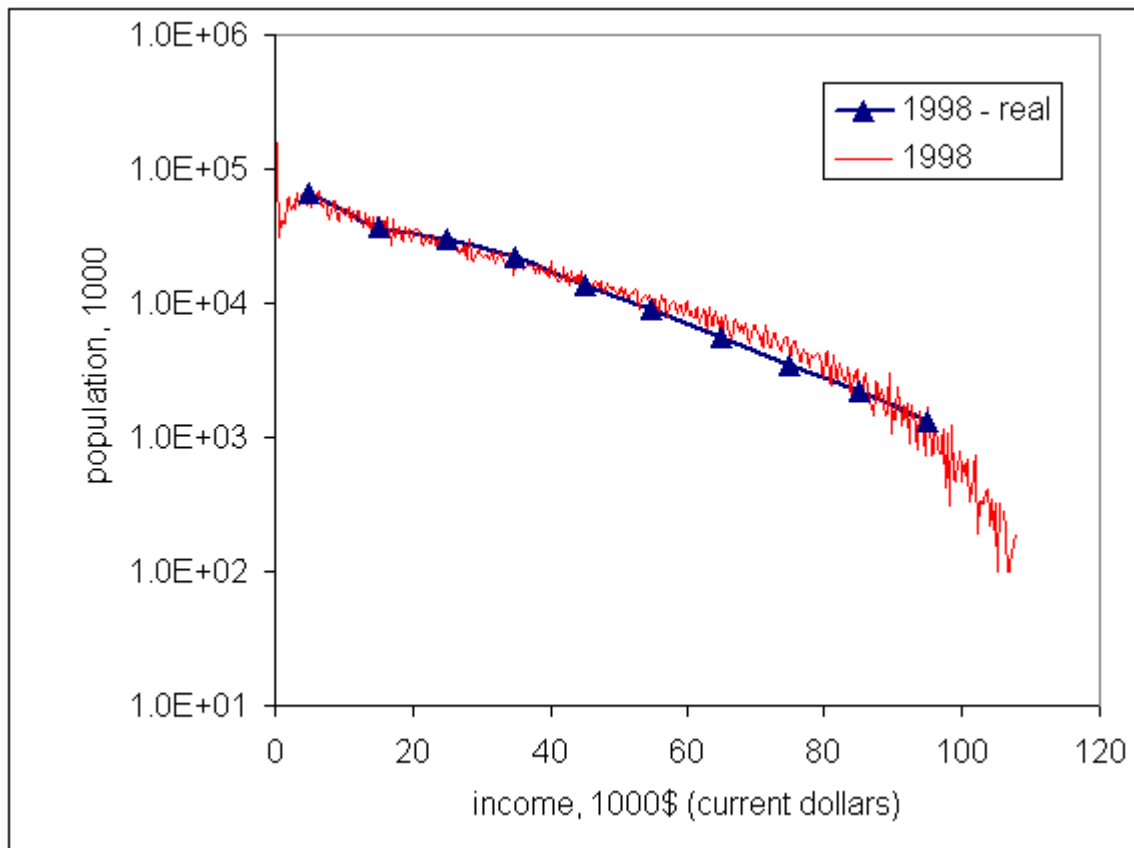


Fig. 10. Comparison of the predicted and observed personal income distributions for the year 1998. The Pareto threshold is between \$45K and \$55K.

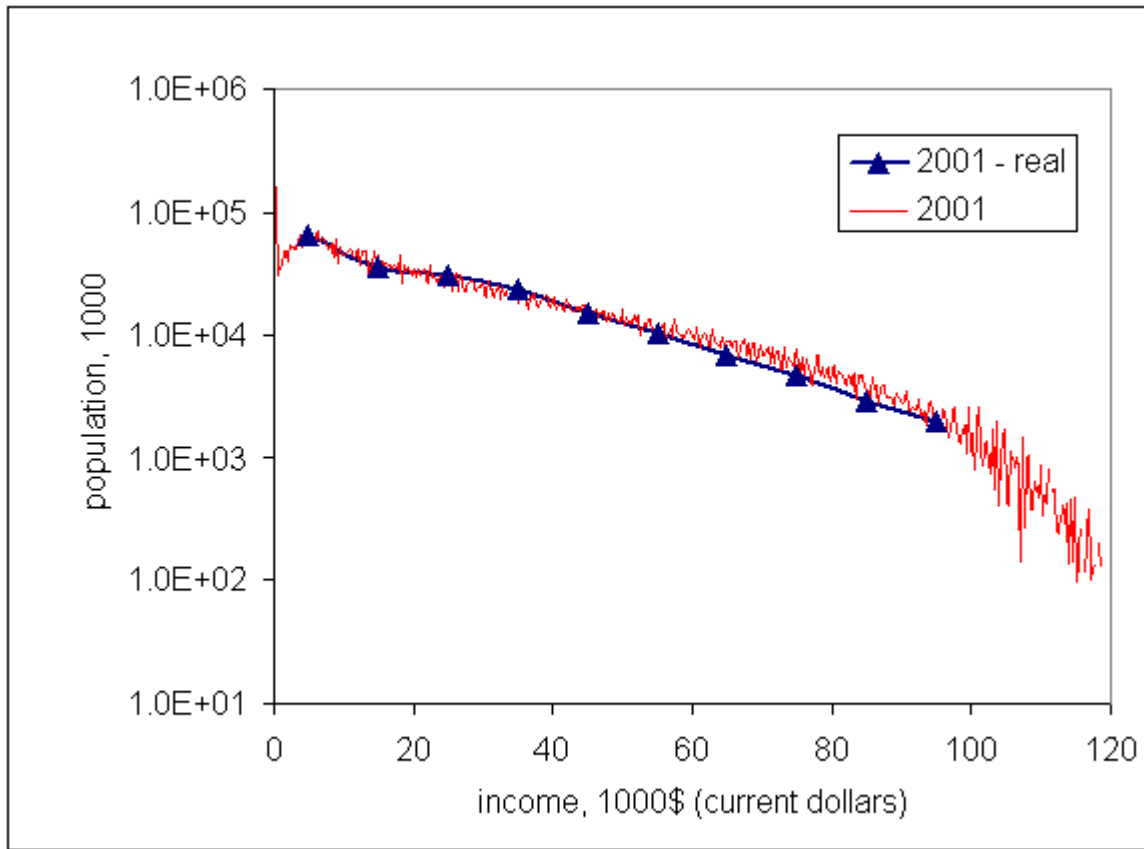


Fig. 11. Comparison of the predicted and observed personal income distributions for the year 2001. The Pareto threshold is between \$55K and \$65K.

Tables

Table 1. GDP growth rates from 1950 to 2002 (The Bureau of Economic Analysis, 2005)

year	current dollar GDP growth rate	real GDP growth rate	per capita current dollar GDP growth rate	per capita real GDP growth rate	per capita current dollar GDP growth rate, age above 15	per capita real GDP growth rate, age above 15
1950	1.099	1.087	1.077	1.065	1.085	1.073
1951	1.155	1.077	1.135	1.059	1.144	1.067
1952	1.056	1.038	1.038	1.021	1.046	1.028
1953	1.059	1.046	1.041	1.029	1.049	1.036
1954	1.003	0.993	0.985	0.976	0.992	0.983
1955	1.090	1.071	1.071	1.053	1.079	1.060
1956	1.055	1.019	1.036	1.001	1.043	1.008
1957	1.054	1.020	1.035	1.002	1.041	1.007
1958	1.013	0.990	0.996	0.974	0.999	0.977
1959	1.084	1.071	1.066	1.053	1.070	1.057
1960	1.039	1.025	1.023	1.009	1.027	1.012
1961	1.035	1.023	1.018	1.006	1.022	1.011
1962	1.075	1.061	1.059	1.044	1.054	1.040
1963	1.055	1.044	1.040	1.029	1.038	1.027
1964	1.074	1.058	1.059	1.043	1.057	1.041
1965	1.084	1.064	1.070	1.051	1.067	1.048
1966	1.096	1.065	1.083	1.053	1.078	1.048
1967	1.057	1.025	1.045	1.014	1.039	1.008
1968	1.093	1.048	1.082	1.038	1.075	1.031
1969	1.082	1.031	1.071	1.021	1.064	1.014
1970	1.055	1.002	1.043	0.990	1.035	0.983
1971	1.085	1.034	1.072	1.021	1.065	1.014
1972	1.099	1.053	1.087	1.042	1.078	1.033
1973	1.117	1.058	1.106	1.048	1.096	1.038
1974	1.085	0.995	1.075	0.986	1.065	0.977
1975	1.092	0.998	1.081	0.988	1.072	0.980
1976	1.114	1.053	1.104	1.043	1.094	1.034
1977	1.113	1.046	1.102	1.036	1.093	1.028
1978	1.130	1.056	1.118	1.045	1.110	1.037
1979	1.117	1.032	1.105	1.020	1.098	1.014
1980	1.088	0.998	1.081	0.991	1.078	0.988
1981	1.121	1.025	1.112	1.017	1.109	1.014
1982	1.040	0.981	1.031	0.971	1.028	0.969
1983	1.087	1.045	1.076	1.036	1.074	1.033
1984	1.112	1.072	1.102	1.062	1.100	1.060
1985	1.073	1.041	1.064	1.032	1.061	1.030
1986	1.057	1.035	1.048	1.025	1.045	1.023
1987	1.062	1.034	1.053	1.025	1.051	1.023
1988	1.077	1.041	1.067	1.032	1.067	1.032
1989	1.075	1.035	1.065	1.026	1.066	1.027

1990	1.058	1.019	1.048	1.009	1.049	1.010
1991	1.033	0.998	1.023	0.988	1.025	0.990
1992	1.057	1.033	1.045	1.021	1.046	1.023
1993	1.050	1.027	1.039	1.015	1.039	1.016
1994	1.062	1.040	1.052	1.030	1.052	1.030
1995	1.046	1.025	1.036	1.015	1.036	1.015
1996	1.057	1.037	1.047	1.027	1.045	1.026
1997	1.062	1.045	1.052	1.035	1.051	1.034
1998	1.053	1.042	1.043	1.032	1.041	1.030
1999	1.060	1.044	1.050	1.035	1.049	1.034
2000	1.059	1.037	1.048	1.026	1.046	1.024
2001	1.032	1.008	0.998	0.974	0.997	0.974
2002	1.035	1.019	1.024	1.008	1.022	1.006
Total increase	35.69	5.67	18.94	3.01	17.55	2.79