



Working Paper Series

**Time and income poverty:  
An interdependent multidimensional  
poverty approach with German time use  
diary data**

Joachim Merz  
Tim Rathjen

**ECINEQ WP 2009 – 126**

# Time and income poverty: An interdependent multidimensional poverty approach with German time use diary data

Joachim Merz\*  
Tim Rathjen

*LEUPHANA University Lüneburg – IZA*

## Abstract

Income as the traditional one dimensional measure in well-being and poverty analyses is extended in recent studies by a multidimensional poverty concept, however, two important aspects are missing: time as an important dimension and the interdependence of the often only separately counted multiple poverty dimensions.

Our paper will contribute to both aspects: We consider time – and income – both as important resources of everyday activities; the interdependence of the poverty dimensions will be evaluated by the German population.

Referring to the time dimension, we follow Sen's capability approach and argue, that restricted genuine, leisure time might exclude from social participation. The substitution between income and genuine leisure time is estimated by a CES-utility function of general utility with the German Socio-Economic Panel. We disentangle time, income and interdependent multidimensional poverty regimes characterising the working poor by a multinomial logit based on German 2001/02 time use diary data.

One striking result: the substitution between time and income is significant and we find an important fraction of time poor who are unable to substitute their time deficit by income. These poor people are ignored within the poverty and well-being as well as the time crunch/time famine discussion so far.

**Keywords:** Interdependent multidimensional time and income poverty, time and income substitution, extended economic well-being, satisfaction, CES utility function estimation, working poor, German Socio-Economic Panel, German Time Use Surveys 2001/02.

**JEL classification:** : D31, D13, J22.

---

\* **Corresponding author:** Univ.-Prof. Dr. Joachim Merz, Dipl.-Kaufmann Tim Rathjen, LEUPHANA University Lüneburg, Department of Economic, Behaviour and Law Sciences, Research Institute on Professions (Forschungsinstitut Freie Berufe, FFB)), Chair 'Statistics and Professions', CREPS (Center for Research in Entrepreneurship, Professions and Small Business Economics), IZA (Institute for the Study of Labour), Scharnhorststr. 1, 21332 Lüneburg, Tel.: +49 4131 / 677- 2051, Fax: +49 4131 / 677- 2059, E-Mail: [ffb@uni-lueneburg.de](mailto:ffb@uni-lueneburg.de), <http://ffb.uni-lueneburg.de>.

## **Introduction**

Recent poverty, well-being and inequality studies extend the traditional income based poverty concept by a multidimensional approach. At least three challenging questions thereby have to be answered for any empirical analysis: first: which poverty dimensions should be incorporated, second: how to model the inter-dimensional relations, and third: how to evaluate the set of dimensions to define an interdependent multidimensional poverty line to finally quantify poverty.

Our study will contribute to the multidimensional poverty discussion by a novel empirical based consideration of the interdependence of multiple poverty dimensions. First: beyond income as the central material resource, we consider time as a striking and prominent resource of everyday activities and participation in social life and hence focus on the two dominant poverty dimensions: time and income. Within Sen's capability frame we thereby consider time as genuine leisure time as an indicator of a finally remaining personal and genuine resort for social participation. Second: the interdependence of the poverty dimensions will be estimated by a CES-utility function approach specifying the individual's satisfaction/utility with a possible substitution and respective trade-off between time and money, and third: the value judgement of the multiple poverty threshold level will be estimated empirically by a "satisfaction with life" approach to draw an interdependent multidimensional poverty line and to quantify poverty in multiple dimensions for Germany.

In our empirical analysis we consider the population's evaluation with data from the German Socio-Economic Panel and estimate the substitution between genuine leisure time and income. The multidimensional poverty threshold utility level then is derived at the multiple dimensions' poverty lines. Given this quantification we then disentangle different single time, single income and multidimensional poverty regimes and discuss the results based on the German Time Use Survey 2001/02 with more than 35.000 diaries. We further quantify competing socio-economic explaining factors to be poor for each poverty regime by a multinomial logit estimation to extract significant influences and to provide hints of a targeted respective economic and social policy.

One striking result for Germany: the estimation of "satisfaction with life" utility results in a significant substitution between genuine leisure time and income. We face an important fraction of time poor who are unable to substitute their degree of time poverty by income. These poor people are ignored so far within the poverty and well-being as well as the time crunch and time famine discussion.

# 1 Background, Literature and Model Characteristics

## 1.1 Multidimensional Poverty and Time as a Poverty Dimension

Within the last decades emphasis of economic well-being and poverty research is laid on the multidimensionality of poverty and social exclusion (Deutsch and Silber 2005, Nolan and Whelan 2007, Groh-Samberg 2008, Lugo and Maasoumi 2008, Bourguignon and Chakravarty 2003, Tsui 2002). The income centred analyses are extended whereat the relative deprivation approach addresses the exclusion “from ordinary living patterns, customs and activities caused by lack of resources” (Townsend 1979, 16). Within the “living conditions (Lebenslagen)” approach also other resources than income as the cause of disadvantages are incorporated when poverty are discussed (e.g. Andreß and Lipsmeier 1995). And, there is an increasing emphasis on multidimensional poverty and social exclusion which is strongly influenced by Amartya Sen’s capability approach with its freedom to be able to satisfy the “ends”, not “means” (Sen 1999, 90 and Sen 1985)<sup>2</sup>. As an empirical result the EU Laeken social inclusion indicator set considers not only income poverty and income inequality but also educational disadvantages, health inequalities, unemployment and worklessness (Atkinson 2003).

Though the discussion is broad for many dimensions to be included in a multidimensional poverty approach (Cappellari and Jenkins 2007 for a summary), however, the time dimension is hardly considered. Yet the time dimension is seen as an important poverty dimension under different perspectives.

From a sociology perspective, time crunch, time famine, time squeeze or hurriedness describe increased experience of time pressure, which can be considered as a new social problem of post-industrial societies (Bonke and Gerstoft 2007, Sullivan 2007, Rosa 2003, Garhammer 2002a, Linder 1970). Though some researches see time pressure as an illusion and a consequence of choice rather than necessity (Goodin et al. 2005), increased economic and labour market problems escalate working pressure and time crunch. With focus on the time and income poor Bittman 1999 stated „The ability to participate in [social life] [...] is the product of both access to leisure goods and services (income dimension), and a sufficient quantity of leisure time (time dimension)”. Concerning market and nonmarket relations Vickery 1977 and Harvey 2007 argue that time poor individuals realize less household production as a result of their time deficit and hence create less goods and services in their own households; they have to substitute these “missing” products and services at the market.

From the economic perspective time itself and in connection with income is of longstanding and broad interest (Hamermesh and Pfann 2005, Diamond 1994). Within the microeconomic static neoclassical labour supply approach a rational individual there maximises its utility/satisfaction as a function of consumption (C) and leisure (L) subject to the time and budget restrictions.<sup>3</sup> The solution is the optimal allocation of total income (WT, W=wage, T=total time) between consumption expenditures (PC, P=prices, C=consumption) and valued

---

<sup>2</sup> For social cohesion see also Osberg 2003.

<sup>3</sup> The allocation of time over many periods is the well-known focus of the *intertemporal* neoclassical dynamic optimization model of the consumption-leisure decision (e.g. Hall 1988).

leisure (WL):  $PC+WL=WT+G$  ( $G$ =other income). Though this is sometimes called the “labour/leisure” question, it is indeed a consumption/leisure one.<sup>4</sup>

In the sequel of this argument together with Osberg 2002 we argue, that “... there is good reason to think that people care about both money income and the amount of time they have to use to earn that income ... [with the consequence that] any inequality measuring has to consider time if money income differences are heavily influenced by differences in working time” (Osberg 2002, 3). The working poor perspective here accentuates the swamping working hours to earn income but still being poor with no time remaining for any social participation.

The large literature on social interaction (e.g. Osberg 2003) moreover stresses the importance of social implications of work for an optimal co-ordination of human activities – here work and leisure – for individual well-being (Jenkins and Osberg 2005, Merz 2002) including its poverty aspect.

In our study, we do not focus on total leisure time (L) as the total counterpart to individual working hours, but focus on genuine leisure time. When working hour commitments by nonmarket, household work and further responsibilities are extracted from total leisure, then genuine leisure time could be seen as a final personal resort which remains after all market and nonmarket responsibilities for very personal activities and genuine social participation (e.g. playing soccer with other “social companions” (Jenkins and Osberg 2005, Merz and Osberg 2009)). When even this final resort of personal freedom is limited or not given anymore, then in our study somebody will be called time poor according to the (genuine) leisure time dimension.

## **1.2 Multidimensional Poverty, Interdependence and Evaluation of Poverty Dimensions**

Given the decision which dimensions/components will be captured within multidimensional poverty a judgement about the poverty threshold has to be delivered for quantifying the extent of poverty. Multidimensional poverty in most cases is empirically measured by a list of some activities an individual is excluded from (e.g. Cappellari and Jenkins 2005). A more comprehensive approach has to choose weights when the dimensions are aggregated. The crucial questions, however, are how to substantiate the specific aggregation, how to respect the interdependence between the single dimensions, and how to evaluate the multidimensional threshold (e.g. Nolan and Whelan 2007, 148-150).

Within the quality of life literature there is a longstanding discussion and practice to summarize dimensions to produce a single index<sup>5</sup> by arbitrarily weighting the single dimensions (see Hagerty et al. 2001 for a review). Our concern, however, is to value the substitution between income and genuine leisure and its multidimensional poverty threshold empirically based. To evaluate the poverty dimensions and their interdependence we refer to the recent happiness/satisfaction literature (Frey and Stutzer 2005, 2002, Clark et al. 2008)

---

<sup>4</sup> Then the consumption expenditures are (PC) seen as an income equivalent.

<sup>5</sup> Like the UNDP’s Human Development Index HDI which summarizes life expectancy, education and standard of living.

with its direct measures of satisfaction about quality of life aspects.<sup>6</sup> In the sequel of these approaches we specify a utility function by time and income allowing substitution via a CES production function approach, and evaluate the dimensions' interdependence/simultaneity and the level of the multidimensional poverty threshold by empirical data for Germany.<sup>7</sup>

## 2 Interdependent Multidimensional Poverty – Model and Empirical Strategy

After the motivation and justification of our multidimensional poverty characteristics in the last section, in principle, our model and empirical strategy is already at hand: first: the dimensions within our multidimensional poverty analysis will be income and personal, genuine leisure time; second: the interdependence between the dimensions will be estimated and evaluated by a CES utility function, and third: given this evaluation we can determine a population interdependent multidimensional poverty threshold and finally quantify and discuss the results of the extended poverty approach.

This model will now be applied to the German situation. Our empirical strategy follows four steps:

**Step 1:** Quantify the interdependence/substitution and evaluation of time and income by the estimation of a CES-utility function  $u = f(I, L)$  with genuine time ( $L$ ) and income ( $I$ ) as the arguments.

**Step 2:** Find the multidimensional poverty threshold  $u^{poor} = f(I^{poor}, L^{poor})$  as utility defined at the point of single time and income poverty thresholds.

**Step 3:** Compare each individual's time income dependent utility to the population's multidimensional poverty utility level and assign each individual to one of the multiple poverty regimes.

**Step 4:** Characterize and analyse the poor individuals' socio-economic background for each of the multiple poverty regime.

Within the single steps we also describe our respective data bases, the German Socio-Economic Panel and the German Time Use Study GTUS 2001/02.

Chapter 4 will focus on the time and income substitution estimates (steps 1). Chapter 5 then defines the actual interdependent multiple poverty threshold for Germany (step 2) and chapter 6 discusses the results (steps 3 and 4).

---

<sup>6</sup> For a critical discussion about subjective outcomes in economics and satisfaction as an economic variable see Hamermesh 2004 and Freeman 1978.

<sup>7</sup> Bonke et al. 2009 discuss time and money interdependencies however as a simultaneous determination of economic satisfaction and leisure satisfaction rather than overall satisfactions as a function of its determinants time and income.

### 3 Time and Income Substitution – CES utility estimation

The interdependence of multidimensional poverty measured via information theory with specific distances to a multidimensional poverty line is discussed by Lugo and Maasoumi 2008.<sup>8</sup> Their resulting poverty index is of a CES-like form with some similarities to Bourguignon and Chakravarty 1999, 2003. In Lugo's and Maasoumi's empirical section they arbitrarily choose different elasticities of substitution between the poverty dimensions (Indonesians' expenditure, health status, and level of education). Whereas Lugo and Maasoumi as well as Bourguignon and Chakravarty just present some different elasticities for the sake of exposition the topic, we, however, follow an empirical evaluation of the substitution elasticity to allow a population based evaluation of interdependent multidimensional poverty of time and income as step 1:

**Step 1: Quantify the interdependence/substitution and evaluation of time and income by the estimation of a CES-utility function with genuine time and income as the arguments.**

#### 3.1 CES Utility Function of Time and Income Substitution

For an evaluation of the empirical based substitution magnitude we use a two-input production function ( $u$ ) with income ( $I$ ) and leisure time ( $L$ ) as input factors and utility ( $u$ ) as the output. Not to be restrictive to the kind of substitution we specify a Constant Elasticity of Substitution (CES) utility function<sup>9</sup> by

$$(1) \quad u = f(I, L) = \gamma \cdot (\delta \cdot I^{-\rho} + (1 - \delta) \cdot L^{-\rho})^{-\frac{v}{\rho}}$$

with the substitution elasticity  $\sigma = \frac{1}{1 + \rho}$ ,  $\rho$  as a curvature parameter,  $\gamma$  as a constant<sup>10</sup>,  $v$  as returns to scale, and the input coefficients  $\delta$  to be determined. The degree of substitution between the input factors is measured by the Hicks' elasticity of substitution as the relative change in the proportion of the two input factors as a function of the relative change of the corresponding marginal rate of technical substitution. With Figure 1 we can characterise the degree of substitution from perfect substitution ( $\rho = -1, \sigma = \infty$ ) over a certain degree of substitution (including the Cobb-Douglas case with  $\rho = 0, \sigma = 1$ ) to no substitution at all (complementary input factors,  $\rho = -\infty, \sigma = 0$ ).

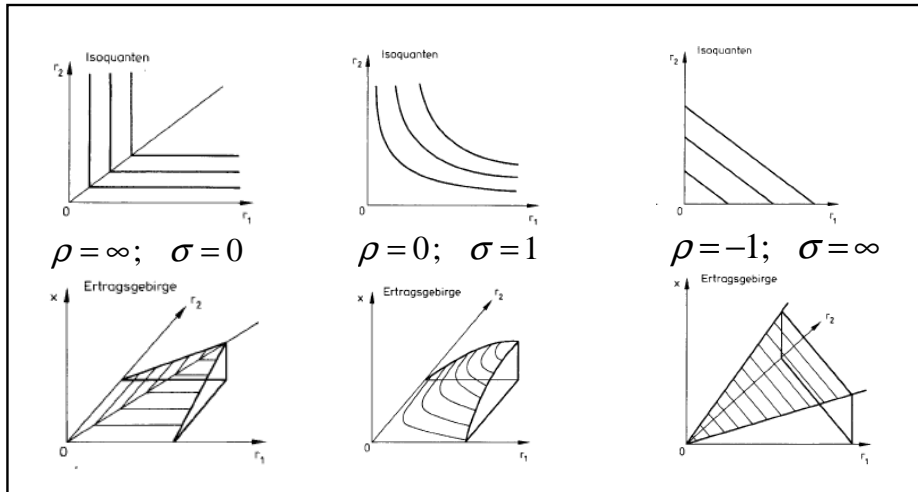
---

<sup>8</sup> Multidimensional poverty indices in general are discussed e.g. in Tsui 2002.

<sup>9</sup> See Fandel 2005 or for a general discussion of the CES production function and Hoff 2002 for more than two multiple input factors.

<sup>10</sup> In the production function discussion  $\gamma$  is formulated and interpreted as technical progress in different ways.

**Figure 1: Isoquants and Outputs of CES Utility/Production Functions**



Source: According to Fandel 2005

A direct estimation of the non-linear CES function has been suggested by Kmenta 1967 with an approximation by the first and second order terms in the Taylor Series expansion around the substitution elasticity of zero:

$$(2) \quad \ln u = \ln \gamma + v\delta \ln I + v(1-\delta) \ln L - \frac{1}{2} \rho v \delta (1-\delta) [\ln I - \ln L]^2 + \varepsilon$$

with  $\varepsilon$  as an iid distributed error term to allow a common reduced form estimation within the Classical Linear Regression Model frame as

$$(3) \quad \ln u = \alpha_0 + \alpha_1 \ln I + \alpha_2 \ln L + \alpha_3 [\ln I - \ln L]^2 + \varepsilon$$

The structural form coefficients can be computed via:

$$\alpha_0 = \ln \gamma \Leftrightarrow \gamma = e^{\alpha_0}$$

$$\alpha_1 = v\delta \quad \text{and} \quad \alpha_2 = v(1-\delta) = v - v\delta \Rightarrow \alpha_2 = v - \alpha_1 \Leftrightarrow v = \alpha_1 + \alpha_2$$

$$\Rightarrow \alpha_1 = (\alpha_1 + \alpha_2)\delta \Leftrightarrow \delta = \frac{\alpha_1}{\alpha_1 + \alpha_2}$$

$$\alpha_3 = -\frac{1}{2} \rho v \delta (1-\delta) \Leftrightarrow \rho = (-2) \frac{\alpha_3}{v \delta (1-\delta)}$$

$$\Rightarrow \rho = (-2) \frac{\alpha_3}{(\alpha_1 + \alpha_2) \frac{\alpha_1}{\alpha_1 + \alpha_2} \left(1 - \frac{\alpha_1}{\alpha_1 + \alpha_2}\right)} = (-2) \frac{\alpha_3}{\alpha_1 - \frac{\alpha_1^2}{\alpha_1 + \alpha_2}}$$

Kmenta's approach has attractive features: OLS can be used and the CES parameters can be estimated in a simultaneous context. However, the estimation of  $\rho$  is dependent upon the scale of the inputs, and the approximation is good around the income and leisure time ratio about 1 and deteriorates for larger or smaller ratios (Thursby and Lovell (1978), p. 370). For reliable results this has to be tested after estimation.



### 3.2 CES Empirical Estimation of the Time and Income Substitution

To avoid an arbitrarily taken substitution elasticity our evaluation will follow satisfaction/utility information revealed by the German population. Our actual data base will be the diary data of the German Time Use Study (GTUS). Since an adequate satisfaction question is not available in the GTUS we choose the German Socio-Economic Panel (SOEP) which provides necessary information for the evaluation and estimation of the time/income substitution.

**SOEP data base:** The SOEP is a wide-ranging representative longitudinal study of private households. It provides information on all household members, consisting of Germans living in the Old and New German States, foreigners, and recent immigrants to Germany ([www.diw.de/soep](http://www.diw.de/soep)). The SOEP was started in 1984. In 2002, there were 11.659 households and 31.087 persons sampled.

While the trade off between income and genuine leisure time does first and foremost exist for working people, we focus on the active population. With the argument that part-time workers are beyond the substitution question, persons with less or equal five hours paid work time a day are excluded. With the further restriction of available information of all three relevant information (income, genuine leisure time, satisfaction) the data base finally involves 5.901 households and 10.831 persons.

#### **Income, Time and Satisfaction – Empirical Assignments**

**Income:** Based on individual earned income and income on invests as well as self-employed and business income, net income results after a reduction of individual direct taxes and social security contributions as well as an addition of state transfers.<sup>11</sup> The literature commonly discusses poverty within a household frame respected by an equivalence scale considering the age dependent needs/requirements and economies of scales of different household types. In Europe the so-called new OECD equivalence scale is reputable with weight one to the household head, 0.5 for further household members with the age of 15 or older, and 0.3 for all other members. **Net equivalent income** – the household net income divided by the household equivalence scale – then is allocated to all household members. This personalized net equivalent income is equivalent to a single person's income at the same well-being level. Net equivalent income constitutes the income variable for the following empirical analyses.

**Time:** Whereas net equivalent income is a widely accepted income measure for poverty analyses, a comparable measure and acceptance for time is not obvious. As discussed, in addition to paid working further obligations and responsibilities, which – at least at a first glance – are not in the substitution perspective like sleeping, housework child care, etc. result in genuine leisure time as a last resort of no obligations and individual leisure and freedom. With the available SOEP information we then define genuine leisure time as typical weekday time for “hobbies and other free-time activities” (see Figure 8 in Appendix, SOEP question 11, 2002). If one agrees with this approach a question remains: Is time to be considered individually or in the household context like the income approach. With the argument that individual time can not be reallocated between the household members (or only to a certain extent) and that genuine leisure time in particular is personal related, we further on stay on the measured individual time without a direct household reference.

---

<sup>11</sup> See Hauser (2008), p. 100.

**Utility/satisfaction:** The SOEP questionnaire among others has an 11 point scaled question about “satisfaction with your life in general” (see Figure 7 in Appendix). The general satisfaction answers will be the population’s evaluation for the income and time individual importance. It is obvious that the concentration on these two explanatory factors can only serve as an approximation and is open for many discussions. Nevertheless, it seems to be the best available approach and data, which likewise are used in other studies, too (Bonke et al. 2006, Rode 2004, Clark and Oswald 1996).

### CES utility estimation results

The CES utility function estimates then yields the Table 1 results. The important estimation result: the respective coefficients are highly significant and will show a significant substitution between genuine leisure time and income.<sup>12</sup> The overall goodness of fit is low but comparable to other cross sectional results.

**Table 1: Income, Time and Satisfaction: CES utility estimation results**

Lhs: ln u (utility)	not standardized coefficients		Standardized coefficients	t-value	significance
	b	Std. deviation	beta		
const.	1,267	,033		37,913	,000
ln I (ln net equivalent income)	,056	,009	,123	6,347	,000
ln L (ln genuine leisure)	,052	,010	,180	5,153	,000
Kmenta_correction, quadr. term	,004	,001	,123	3,167	,002
R <sup>2</sup> / adj. R <sup>2</sup>	3,7% / 3,7%				
n	10.827				

Source: SOEP 2002; own OLS calculations.

The estimated CES utility function then is

$$(5) \quad u = 3,550 \cdot \left( 0,519 \cdot I^{0,297} + 0,481 \cdot L^{0,297} \right)^{\frac{0,108}{-0,297}}$$

$$\text{with } \gamma = e^{\alpha_0} = e^{1,267} = 3,550$$

$$\text{with } v = \alpha_1 + \alpha_2 = 0,056 + 0,052 = 0,108$$

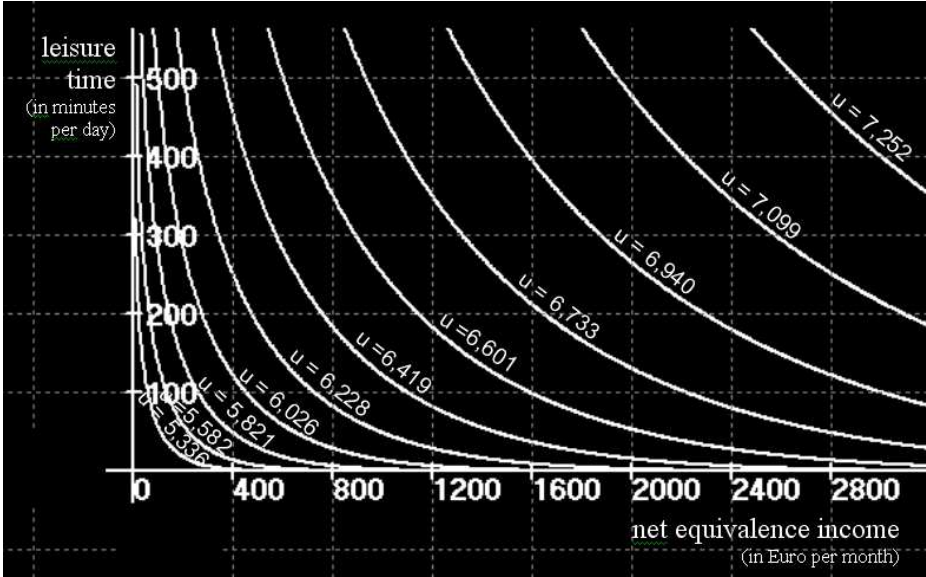
$$\text{with } \delta = \frac{\alpha_1}{\alpha_1 + \alpha_2} = \frac{0,056}{0,056 + 0,052} = 0,519$$

$$\text{with } \rho = (-2) \frac{0,004}{0,056 - \frac{0,056^2}{0,056 + 0,052}} = -0,297$$

<sup>12</sup> Bonke et al. 2006 confirm the substitution of time and money but complements in satisfaction with Danish data.

Thus, we face a constant elasticity of substitution of  $\sigma = 1,422$  with the Figure 2 isoquants of the utility function. The substitution between genuine time and income is a bit less distinct than in the Cobb Douglas type ( $\sigma = 1$ ) situation. Thus it is a bit easier to substitute time by income than in the Cobb Douglas case. The returns to scale with  $\nu = 0,108$  means that a doubling of the inputs time and income will raise utility by around 7%.<sup>13</sup> We discuss further implications within chapter 5.

**Figure 2: Income, Time and Satisfaction: Indifference curves of the estimated CES utility function**



Source: SOEP 2002; own calculations.

As Thursby and Lovell (1978, 370) stated, the estimated CES parameters of the Kmenta approximation are only consistent under specific circumstances. The bias for all parameter estimates increases if  $\rho$  departs from zero (i.e. when  $\sigma$  departs from unity). As a rule of thumb, Hoff (2004, 301) advocates that  $\rho$  should generally not exceed +0.1 to +0.2. With our  $\rho = -0.297$  we fit this criterion. In addition the approximation only converges to the true CES function if  $\ln(I/L)$  is within the convergence circle with a radius of  $|1/(\rho\delta)|$ . Even with some extreme values for our case with income ( $I$ ) = 6000 € net equivalence income per month and genuine leisure time ( $L$ ) = 30 minutes per day the ratio  $\ln(I/L) = 5,298$  is within the required circle with radius  $|1/(\rho\delta)| = 6,487$ . A third criterion considers the returns to scale: Furthermore, the translog approximation quickly fails to predict the CES structure if the returns to scale  $\nu$  exceeds unity (Hoff 2004, 301). With  $\nu = 0,108$  in our case the third criterion is fulfilled and accentuates the goodness of fit of our estimates over a wide range of values outside the approximation point. Figure 2 provides an impression of the estimated curvature and substitution of time and income evaluated by the representative SOEP data.

To summarise: the significant CES coefficients together with the goodness of fit to several criteria of an approximation to a wide range of values accentuate the peculiar significant CES

<sup>13</sup> returns to scale:  $f(k \cdot I, k \cdot L) = u \cdot k^\nu$  with k as a scalar.

estimates and substitution between genuine leisure and income. We discuss implications of the substitution process with the poverty results then.

#### 4 An Interdependent Multiple Poverty Threshold with Time and Income for Germany

Given the above evaluation of the time and income interdependence and evaluation the step 2 task now is:

**Step 2: Find the multidimensional poverty threshold  $u^{poor} = f(I^{poor}, L^{poor})$  as utility defined at the point of single time and income poverty thresholds.**

**Income poor:** The member states of the European Union agree on a relative money income based definition for poverty. The concept identified those individuals as poor (having a poverty risk) whose net equivalent income is below 60% of median net equivalent income, a concept which is followed by the German Federal Poverty and Richness Reports (Bundesregierung 2005, XV). The monetary approach acts on the assumption that income as the central resource for goods and services is mainly determining the living standard (see the further discussion in chapter 2).

**Time poor:** Based on our general discussion of time as a poverty dimension, in principle we draw on Bittman's (1999, 14) time poverty approach: "A commonly employed standard used to benchmark [income] poverty [...] is 50 per cent of the median. [...] Applying an analogous standard (50 per cent of the median leisure time) [...] we can get some idea of what social situation produces the most severe kinds of time poverty". However, we adopt the agreement of the European Union on an income poverty definition described above and define the risk of time poverty at 60% of the median, here 60% of the median genuine leisure time.

As discussed and under the perspective of the very personal related genuine leisure time we do not consider any equalized time concept.

Given these concepts we will use the German Time Use Survey (GTUS) to define actual poverty lines for the income and time dimension to find the respective interdependent multiple poverty threshold. Though we could stay on the SOEP data we prefer to take the more detailed and more accurate GTUS diary data to focus not the stylized but actual situation of the individual days under consideration.

**GTUS diary data base:** The actual German Time Use Survey was conducted by the Federal Statistical Office in 2001/2002. The original sample contains 35.813 diaries of three day of 11.962 persons with the age of 10 years or older in 5.171 households. In the time use diaries for each ten minute interval an activity, written in own words, are collected with an secondary (parallel) activity and "with whom" and "where" information (see Figure 6 in Appendix). Coded activities are available for the user. Supplementary personal and household questionnaires provide socio-economic background variables. Field work started in April 2001 and finished in May 2002.<sup>14</sup>

---

<sup>14</sup> For further GTUS information see [www.forschungsdatenzentrum.de](http://www.forschungsdatenzentrum.de) and the comprehensive *GTUS-Compass* about the broad range of GTUS 2001/02 information and its usage is provided by Statistisches Bundesamt 2006a.).

After excluding the non active population and respecting the 5 hours constraint analogous to the SOEP estimates the ready for estimation sample contains 8.147 diaries of 2.871 persons in 1.890 households.

**Net equivalized income** is calculated as monthly net equivalent income out of the household questionnaire supplement.

**Genuine leisure time** will be defined as the sum of daily activities that are allocated to one of the main categories Social Life (“Sozialleben und Unterhaltung”; activities 500-531), Participation at Sportive Activities or Activities in the Nature (“Teilnahme an sportlichen Aktivitäten bzw. Aktivitäten in der Natur”; activities 600-649), Hobbies and Games (“Hobbies und Spiele”; activities 700-739) and Mass Media („Massenmedien“; activities 800-849).

**Interdependent Multidimensional Poverty Threshold**  $u^{poor} = f(I^{poor}, L^{poor})$

The GTUS 2001/02 median net equivalence income of 1.322,58 € per month and yields the single 60% income poverty line of  $I^{poor} = 793,55$  € (see Table 4 in Appendix). The median leisure time of 310 minutes per day yields the single 60% time poverty line of  $L^{poor} = 186$  minutes (see Table 4 in Appendix).<sup>15</sup> Note, that these definitions typically are based on the total population (active and non-active). The later empirical investigation focus on the active population with its working poor.

The interdependent multidimensional poverty line then is given by that estimated CES utility isoquant which runs through the intersection of both single poverty lines:

$$(7) \quad u^{poor} = f(I^{poor}, L^{poor}) = 3,550 \cdot \left( 0,519 \cdot 793,55^{0,297} + 0,481 \cdot 186^{0,297} \right)^{\frac{0,108}{-0,297}} = 6,418$$

To formulate a direct expression of the utility isoquant through  $(I^{poor}, L^{poor})$  interdependent multidimensional poverty line, we resolve equation (7) for genuine leisure time  $L$  (as the ordinate) at  $u^{poor} = 6,418$  and get:<sup>16</sup>

$$(8) \quad L = \left( 12,558 - 1,079 \cdot I^{0,297} \right)^{\frac{1}{0,297}}.$$

If an individual’s utility – evaluated by the population’s CES interdependence at its actual genuine leisure time and actual net equivalent income – will be less than 6,418 then this person will be called multidimensional poor.

## 5 Interdependent Multidimensional Time and Income Poverty – Results for Germany

Given the interdependent multidimensional poverty line from above we are now able to assign each individual not only to be poor or not but also to one of the poverty regimes under the multiple poverty line (step 3) as in Figure 4:

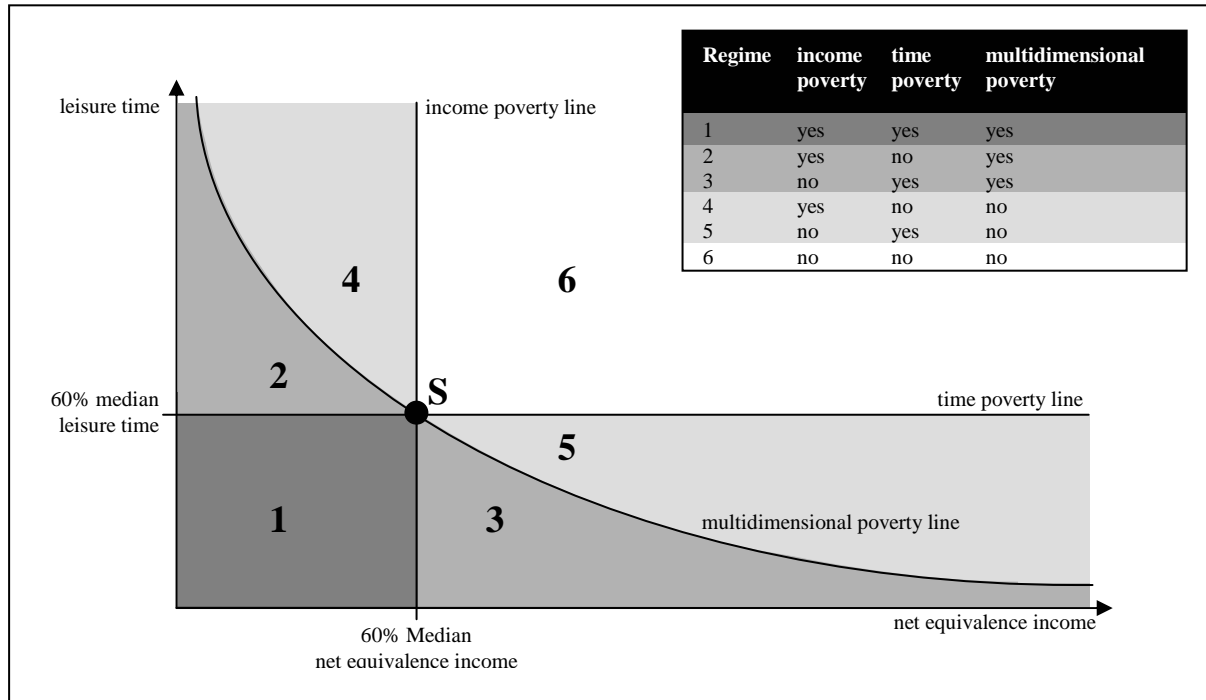
<sup>15</sup> Descriptive information of net equivalent income and genuine leisure time can be found in the Appendix.

<sup>16</sup> See the single steps in the Appendix.

**Step 3: Compare each individual's time income dependent utility to the population's multidimensional poverty utility level and assign each individual to one of the multiple poverty regimes.**

Based on the GTUS 2001/2 diary data we face the following descriptive results of the poverty head count ratios. Figure 4 and Table 2 provide information for each of the six poverty regimes as well as aggregates for a one dimensional poverty view only.

**Figure 3: Multidimensional Poverty and its Regimes**



Source: own Figure.

**Income poor (one dimensional, regimes 1, 2, 4):** The traditional income based poverty measure counts those persons as poor which are under 60% median net equivalence income, which here are 795,33 € (regimes 1, 2 and 4); 4,8% then are income poor. Note, that this figure is for the active population only, the working poor. As to a recent study of the “working poor” based on the SOEP 2002 data about 6,8% of the active population are measured as income poor by the net equivalent concept (Rhein 2009, 4). With respect to the different data bases and a lower workweek there of about 19 hours, our result seems to be roughly confirmed.<sup>17</sup>

**Multidimensional poor (regimes 1, 2, 3):** All individuals of the active population below the multidimensional poverty line are called multidimensional (MD) poor (union of the regimes 1, 2 and 3). In Germany 2001/02 we face 12,3% of all the active population as poor in this multiple sense.

<sup>17</sup> Based on the total population, the recent the Federal Poverty and Richness Report the head count ration of the income poor based on the total population, active and non-active, is about 14%, however based on another data base, the Income and Consumption Survey (EVS) of 2003 and measured at 60% of the average (arithmetic mean) net equivalent income with 980 €(Bundesregierung 2008, 23).

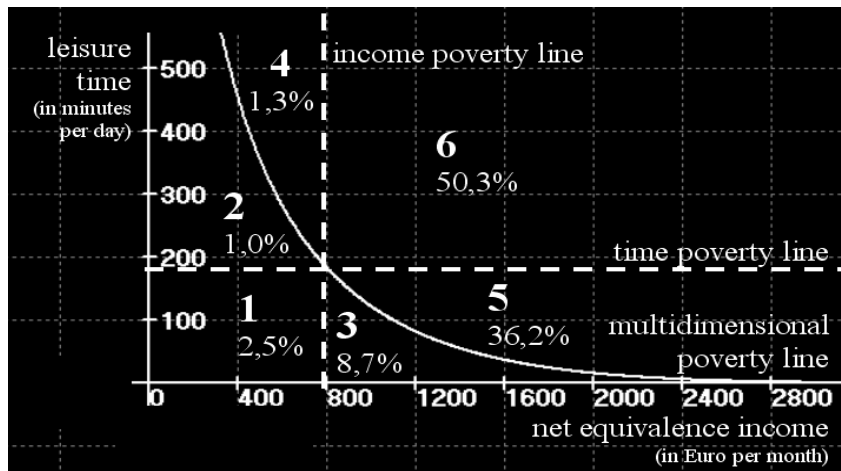
Compared to the traditional one-dimensional income poverty threshold (regimes 1, 2, 4) the evaluated multidimensional substitution would diminish income poverty (regime 4) by 1,3% (as percentage points here and in the following). These persons value their remaining genuine leisure time higher than the respective poor income and cross the multidimensional poverty line. On the other hand, the revealed substitution adds person to the poor, which spend efforts and time to earn more than 60% median net equivalent income and are not considered so far as income poor: 8,7% earn more than the poverty threshold (795,33 €) but nevertheless are poor because of their evaluation of pressured leisure time, which is below the time poverty line (regime 3).

**Time poor (one dimensional, regimes 1, 3, 5):** An individual is time poor if his or her leisure time is under 60% median leisure time respectively being in a position below the time poverty line (regimes 1, 3 and 5). The respective head count ratios sums up to 47,3%. That almost 50% of the active are leisure time poor depends on the definition of its threshold with the active and the non-active population, where the non-active normally will have more time spend for leisure. Thus the time poverty line of about 3 hours a day is hardly exceeded by the time poor. The relatively large one dimensional time poor figure, however, is drastically reduced when substitution is considered: 36,2% of the active population with an income-time-position in regime 5 are able to or do substitute their time deficit by earning additional income. They trade off less genuine leisure time for more income. A further inspection according their working time efforts out of Table 2 refers to particular time intensive working schedules: with 43,3% in this regime more than the average of all active persons work more than 41 hours a week.

From the above 47,3% one dimensional time poor persons then only 8,7% remains poor (regime 3) trading off time for money above the income poverty threshold but still stay multidimensional poor.

**Strict time and income poor (regime 1):** This is the hard core of 2,5% multidimensional disadvantaged persons. They are poor by income as well as by the remaining genuine leisure time. They in particular have not an accepted minimum (evaluated by the German population) of leisure to participate in social life neither in the public nor in the private sphere. Remember: genuine leisure time here includes social life, sports activities, hobbies and games and mass media like TV. According to socio-characteristics (Table 2) 4,5% are working more than 41 hours; all minor working hour groups lie between 1,2% and 2,2% respectively 3,5% with less than 20 weekly working hours. The strict multidimensional poor are in particular foreigners (8,0%) compared to 2,4% Germans and particularly live in East Germany.

**Figure 4: Multidimensional Poverty:  
Overall results according to Poverty Regimes**



Source: SOEP 2002 and GTUS 2001/02, own calculations.

### Socio-economic characteristics and multidimensional poverty

Discussing with Table 2<sup>18</sup> socio-economic characteristics within multidimensional poverty in particular, we will focus on those poor who trade off time for money beyond the income poverty threshold but still stay multidimensional poor (regime 3). They face in general a time deficit which can not be substituted by their income though this income is above the income poverty line. The spectrum of multidimensional poor time-income positions in regime 3 varies from either very genuine leisure time poor people which might earn a lot of income (far right in Figure 3 of regime 3) to time poor people where the time deficit can not be substituted by the low income narrow above the income poverty line (near the intersection of the strict income and time poverty lines).<sup>19</sup> Nevertheless some further striking results out of Table 2 will be mentioned.

**Gender:** There are relatively more multidimensional (MD) poor women who in general are not able to substitute their time deficit by income probably because of further household obligations. This holds in particular for MD poor women with income above the income poverty line (regimes 3).

**Age:** Persons in their particular work intensive high time pressure age, between 25 and 44 years, say, yield a high regime 3 poverty ratio (10,2%) compared to the other age groups.

**Education:** Compared to other educational certificates a high scholl diploma and university degree prevent MD poverty the most.

**Occupation:** As it might be expected the self-employed, as liberal professions (Freie Berufe) and entrepreneurs, is the most time pressured and time poor group followed by white collar workers. In particular, for entrepreneurs almost 30% have to be assigned as MD poor. Though time pressure plays a prominent role, nevertheless, about 15,3% of the entrepreneurs are income poor (regimes 1, 2, 4), can not substitute above poverty income by time (regime 3: 15,2%) and face strict MD poverty (regime 1: 11,7%) the most. This is a strong hint to a larger

<sup>18</sup> All percentages in Table 2 refer to the respective socio-economic group.

<sup>19</sup> The time poor persons of regime 5, however, are able to substitute their time deficit by their income above the income poverty line.



**Table 2: Interdependent Multidimensional Poverty in Poverty Regimes by Socioeconomic Characteristics (in %)**

	Poverty Regime						overall	Income poverty	Time poverty	Multidimensional poverty
	1	2	3	4	5	6				
<b>Gender</b>										
Male	2,5	1,2	8,3	0,9	34,8	52,3	100	4,6	45,6	11,9
Female	2,4	0,8	9,4	2,1	38,5	46,4	100	5,2	50,4	12,6
<b>Age</b>										
10 to 17	3,5	3,4	10,2	7,5	18,8	56,6	100	14,4	32,6	17,1
18 to 24	1,9	2,2	6,8	1,3	24,9	62,9	100	5,4	33,7	10,9
25 to 44	2,7	1,0	10,2	1,6	36,9	47,6	100	5,2	49,8	13,9
45 to 64	2,3	0,6	6,9	0,7	39,7	49,8	100	3,6	48,9	9,8
65 or older	4,5	2,6	11,3	4,2	43,0	34,3	100	11,4	58,8	18,5
<b>Education</b>										
No certificate	3,7	0,5	11,6	3,8	32,4	48,0	100	8,0	47,6	15,8
Secondary school I	2,0	0,6	9,6	2,0	32,7	53,1	100	4,5	44,3	12,1
Secondary School II	3,0	1,6	10,0	1,2	34,5	49,7	100	5,8	47,5	14,5
High school diploma	1,5	1,1	6,9	0,8	37,7	52,1	100	3,3	46,0	9,4
University degree	3,1	0,4	6,5	0,8	48,1	41,1	100	4,3	57,6	10,0
<b>Occupational status</b>										
Liberal professions	4,6	0,4	6,3	2,2	37,6	48,9	100	7,2	48,5	11,3
Entrepreneur	11,7	2,6	15,2	1,0	38,1	31,5	100	15,3	65,0	29,4
Civil servant	0,0	0,0	4,1	0,1	41,2	54,4	100	0,3	45,3	4,3
White-collar worker	0,7	0,4	6,8	0,5	41,4	50,2	100	1,6	49,0	7,9
Blue-collar worker	2,2	1,0	10,7	2,1	32,0	51,9	100	5,3	45,0	14,0
Other occupation group	6,3	4,2	10,8	3,9	18,6	56,2	100	14,4	35,8	21,3
<b>Weekly working hours</b>										
Thru 20	3,5	1,8	12,9	1,8	21,1	51,0	100	7,1	45,4	18,1
21 to 25	1,2	1,8	8,1	1,2	31,4	56,3	100	4,2	40,7	11,1
26 to 35	2,2	0,2	9,0	3,3	33,9	51,3	100	5,7	45,2	11,4
36 to 40	1,2	0,8	7,5	0,7	36,1	53,8	100	2,7	44,8	9,5
41 or more	4,6	0,7	10,1	0,9	43,3	40,3	100	6,3	58,0	15,5
<b>Nationality</b>										
German	2,4	0,9	8,8	1,3	36,3	50,3	100	4,6	47,4	12,1
Foreigner	8,0	5,3	5,1	3,1	29,7	48,8	100	16,4	42,8	18,3
<b>Household/Family structure</b>										
Single-household	1,9	0,8	7,6	1,8	38,8	49,1	100	4,5	48,2	10,3
Couple without kids	0,5	0,3	3,5	0,6	42,0	53,1	100	1,4	46,0	4,2
Couple with one kid	2,4	0,6	7,0	1,0	36,5	52,6	100	3,9	45,9	9,9
Couple with two kids	1,8	0,9	12,4	0,5	33,9	50,6	100	3,2	48,1	15,1
Couple, >= three kids	9,3	3,9	18,4	1,8	27,6	39,0	100	15,1	55,3	31,6
single parent, one kid	4,2	3,5	11,6	6,9	23,3	50,6	100	14,5	39,1	19,2
single parent, >=kids	5,2	1,7	9,8	4,2	32,8	46,2	100	11,2	47,9	16,8
other households	4,6	1,1	11,0	0,2	34,2	48,9	100	5,9	49,8	16,7
<b>Region</b>										
West Germany	1,8	0,9	7,3	1,3	35,7	52,9	100	4,0	44,8	10,1
East Germany	5,4	1,5	14,6	1,5	38,5	38,6	100	8,3	58,5	21,5
<b>Overall</b>	<b>2,5</b>	<b>1,0</b>	<b>8,7</b>	<b>1,3</b>	<b>36,2</b>	<b>50,3</b>	<b>100</b>	<b>4,8</b>	<b>47,3</b>	<b>12,2</b>

Source: own calculations with GTUS 2001/02, weighted data.

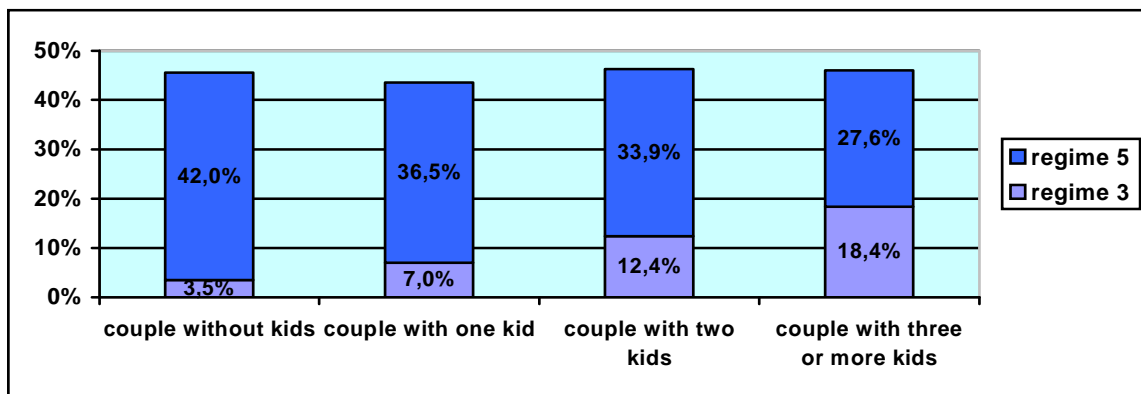
group of low self-employed income which is confirmed e.g. by income analyses with the German Income Tax by Merz 2008, 2007, Merz and Zwick 2005.

**Weekly working hours:** Time intensive weekly working (41 hours and more) and time less intensive, part time working hours (thru 20 hours) cause the prominent MD poverty groups. They are also examples for the discussed situation in poverty regime 3 for the more extreme situation with relative high working efforts with respective high income and high time pressure (regime 3: 10,1%) as well as low working efforts with respective low above poor income and lower time pressure with both unable to substitute time for income still being MD poor.

**Nationality:** Foreigners compared to Germans face a higher risk to be MD poor (18,3% vs. 12,1%) with a pronounced higher risk to be strictly poor in the time and income dimension.

**Household/Family structure:** Single parents with kids have a higher risk to MD poverty (19,2% respective 16,8%) as well as strict time and income poverty (4,2% respective 5,2%) than single parents without kids. A further striking result is observable regarding the number of kids in couple households. The head count ratio of working people that are able to substitute their time deficit by above poor income not being MD poor (regime 5) is diminishing as the number of children in the household is rising. At the same time, the head count ratio of working people that are not able to substitute their time deficit by income above poverty line (regime 3) is rising by an increased number of children (also see Figure 5). While the aggregate of both regimes is approximate constant by the number of children in any case (app. 45% being time poor), an expected move to MD poverty by the rising number of children will be evident.

**Figure 5: Time poor and income above income poverty by household/family structure**



Source: own calculations with GTUS 2001/02, weighted data.

**Region:** MD poverty (21,5%) as well strict time and income poverty (5,4%, regime 1) is stronger in East Germany than in West Germany (10,1% respective 1,8%).

To summarise: MD poverty with its different poverty regimes heavily depends on the socio-economic individual living conditions and strikes also the empirical importance of time and time pressure of being poor in multiple dimensions in our society.

## 6 Multivariate Estimation of Explanatory Factors in Interdependent Multidimensional Time and Income Poverty Regimes

Whereas the last chapter discussed the influence of single socio-economic characteristics when MD poverty is explained, this final chapter analyses its significance when the characteristics compete against each other; this is the second task of our step 4:

### **Step 4: Characterize and analyse the poor individuals' socio-economic background for each of the multiple poverty regime.**

We present two multinomial logit estimates<sup>20</sup>: Non income and non time poverty (regime 6) is chosen as the reference category in Table 3, whereas strict income poverty (regimes 1, 2, 4) is the reference category in Table 8 (Appendix). Overall the goodness of fit according to Cox and Snell (0,362, respective 0,352), Nagelkerke (0,405 respective 0,398) and Mc Fadden (0,200 respective 0,201) is satisfactory for both models.

In accordance with the descriptive results, being female raises the probability to be time but not income poor (regimes 3 and 5) significantly, possibly due to childcare and household burden. Further, a university degree significantly raises the probability in the substitution regime 2 (not time but income poor, MD poor) but diminishes the probability within the substitution regime 3 (not income but time poor, MD poor).

Most coefficients for the occupational status, with regime 3 exception for entrepreneurs, are not significant. Entrepreneurs because of time pressure in particular have no chance to substitute time for income. In the multivariate analysis thus the occupational status for the other occupations plays not a significant role in explaining the probability to be MD poor with its different regimes any more.

The weekly working hour situation for all working hour groups and for all MD poverty regimes, however, is highly significant with prominently rising the risk of poverty when work is very time incentive (over 41 hours the week). Thus time pressure with squeezing genuine leisure time is an important part yielding MD poverty.

Personal income as well as the remaining household income (to test distinct parts of equivalent income) diminishes in the same way significantly all MD poverty regimes.

Moreover the estimation confirms that the number of kids in a household has a significant and discussed influence of the parents' income-time-position in particular for couples. The risk for MD poverty in all regimes is rising with an increased number of children.

Regional influences remain significant only for regime 5, raising the probability not being MD poor any more because of substitution time for income.

**To summarise:** Together with the more extended discussion with the descriptive results, the multinomial logit estimates strikes the importance of single socio-economic factors for a higher risk to be MD poor and within MD poverty regimes. To be a women, having a university degree or being an entrepreneur rises in particular MD poverty above the income poverty lines and genuine leisure time poverty which can not be traded for income (regime 3). Very important and significant for all MD poverty regimes is the individual working hour

---

<sup>20</sup> For the econometrics of the multinomial logit model see e.g. Greene 2008, 842 pp.

schedule. Intensified by non-market unpaid working hours in the household, rising paid and unpaid working hours not only yield diminishing genuine leisure time, but influence MD poverty in all its regimes by the importance of time pressure not substitutable by income.

**Table 3: Multidimensional Poverty and its Regimes – Multinomial Logit Estimation for the Active Population**

	category I regime 1	category II regime 2	category III regime 3	category IV regime 4	category V regime 5
constant	15,288 ***	16,777 ***	-,026	11,938 ***	-1,968 ***
<b>Personal characteristics</b>					
female	,514	-,357	,520 ***	-,626	,418 ***
age	,057	-,152	,047	,086	,057 ***
Age <sup>2</sup> /100	-,014	,273 **	-,050	-,042	-,060 ***
<b>Education</b> (reference: no certificate)					
secondary scholl_I (Hauptschule)	,581	1,557	-,061	2,006	-,124
secondary scholl_II (Realschule)	1,079	2,344 *	-,252 *	1,875	-,100
high scholl diploma	1,051	2,859 **	-,110	1,393	-,021
university degree	2,454	3,762 **	-,162 **	2,112	,071
<b>Occupational status</b> (reference: blue-collar w.)					
liberal professions	-,202	-2,133 *	-,285	-,039	-,249 *
entrepreneur	,570	,194	,483 ***	-,471	,213 *
civil servant	-,174	,753	-,275	,436	-,089
white-collar worker	,073	,243	-,060	,364	,062
other occupation group	1,206	,691	,082	2,789 ***	-,198
<b>Weekly working hours</b> (reference: 41 or more)					
thru_20	-2,454 ***	-2,388 ***	-,646 ***	-2,305 ***	-,487 ***
21 to 25	-4,220 ***	-2,233 **	-1,323 ***	-2,279 ***	-,526 ***
26 to 35	-1,551 ***	-2,320 ***	-,630 **	-1,452 **	-,401 ***
36 to 40	-1,762 ***	-1,002 *	-,799 ***	-1,670 ***	-,340 ***
<b>Income situation</b>					
personal net income	-,015 ***	-,016 ***	-,001 ***	-,013 ***	,000 ***
residual income	-,015 ***	-,016 ***	-,001 ***	-,013 ***	,000 ***
<b>Nationality</b> (reference: German)					
foreigner	1,797 **	2,238 ***	-,180	1,534 *	-,156
<b>Household/Family structure</b> (reference: couple without kids)					
single person household	-6,124 ***	-4,302 ***	-,545 **	-4,613 ***	,192 *
couple with one kid	5,044 ***	6,361 ***	,819 ***	3,561 ***	,041
couple with two kids	7,790 ***	9,648 ***	1,494 ***	6,065 ***	,018
couple with three or more kids	13,821 ***	15,343 ***	2,762 ***	10,933 ***	,086
single parent with one kid	,008	,836	,440 **	,333	,006
single parent with two kids	4,034 ***	5,696 ***	1,246 ***	3,378 ***	,166
other household structure	8,043 ***	7,983 ***	1,839 ***	5,001 ***	,011
<b>Region</b> (reference: West Germany)					
East Germany	,282	-,523	,617	-,160	,482 ***
Degrees of Freedom	135	Cox and Snell	.362		
Prob. Value for LR	,000	Nagelkerke	,405		
n (observations)	7499	Mc Fadden	,200		

Reference category non poor  
Level of significance: \* 10%, \*\* 5%, \*\*\* 1%

Source: own estimation with GTUS 2001/02.

Greater families have a higher risk to MD poverty regardless of being a couple or being single; again time pressure plays a crucial role in addition to the income burden. Living in East Germany has no effects for any single MD poverty regime, however, allows substitution time for income not being MD poor any more.

The second multinomial logit estimation with reference to the income poor accentuates the substitution areas when the time dimension extends pure income poverty (regimes 3 and 5, Appendix Table 3). The single impacts altogether confirm our discussed results.

## 7 Concluding remarks

This study extends income poverty by the time dimension and analyses multidimensional (MD) poverty with its different MD regimes. A squeezed genuine leisure time is interpreted as an exclusion from social life in the sense of Sen's capability and freedom of choice approach when well-being is regarded. With a CES utility function estimation a significant substitution between income and time was evaluated by the German population via the German Socio-economic Panel SOEP 2002 data. With the revealed interdependencies we then could assign, based on detailed German Time Use diary data 2001/02, the individual income-time situation to interdependent multidimensional poverty and its regimes.

The descriptive analyses and the multinomial logit estimation strike the importance of socio-economic characteristics for being MD poor. We quantify gender, education, occupation, working hours, household/family structure, nationality and regional impacts on being poor in different MD poverty regimes. In particular the time burden of work and child care makes it more difficult to substitute the time deficit by income. For this and in particular for women thus time poverty and time pressure in general is an important impact for MD which result in MD poverty even when the income poverty threshold is exceeded but with time being so scarce and valuable that it can not be substituted by an income above the income poverty line.

Thus, our analysis result is a strong case to discuss poverty not any more by the income dimension alone, and also not by the time dimension alone, but with regard to the valued interdependence of time and income together. In particular, there is an important fraction of the population being (marginal) above the income poverty threshold, but by evaluation of the society are not able to trade off their pressured genuine leisure time (regime 3) for income. They are multidimensional poor and are excluded from social participation though they are not poor by its income resource.

Further research certainly is necessary for an extended analysis of time poverty and its impact even for a more dimensional poverty. And, beyond head count ratios, MD poverty intensity has to be quantified by poverty attributes like the poverty gap and distributional information in measures like the Foster-Greer-Thorbecke (FGT, Foster et al. 1984) or the Sen-Shorrocks-Thon poverty measure.<sup>21</sup>

A targeted economic and social policy, including a pronounced time policy for a better coordination of the daily life<sup>22</sup> – aiming at a reallocation of society resources to relieve the poor – should more than now respect and count the time in addition to the income dimension.

---

<sup>21</sup> Sen (1976), Shorrocks (1995), Thon (1979), Osberg and Xu (2002).

<sup>22</sup> Mückenberger 2008 and for new time policy European wide activities Garhammer 2002b.

Public efforts with regard to childcare, appropriate labour market, tax and transfer policies are obvious policy options.

## Appendix

**Figure 6: Extract of time use diary (German Time Use Survey 2001/2002)**

1. Tagebuchtag							
Uhrzeit	Hauptaktivität Bitte immer nur eine Aktivität pro Zeile eintragen!	Verkehrsmittel	Gleichzeitige Aktivität Bitte die wichtigste gleichzeitige Aktivität angeben.	Zeit mit anderen verbracht			
				Kinder unter 10 Jahren	(Ehe-)Partner-in	Andere Haushaltsmitglieder	Andere bekannte Personen
10.00 – 10.10				<input type="checkbox"/>	<input type="checkbox"/>	<input type="checkbox"/>	<input type="checkbox"/>
10.10 – 10.20				<input type="checkbox"/>	<input type="checkbox"/>	<input type="checkbox"/>	<input type="checkbox"/>
10.20 – 10.30				<input type="checkbox"/>	<input type="checkbox"/>	<input type="checkbox"/>	<input type="checkbox"/>
10.30 – 10.40				<input type="checkbox"/>	<input type="checkbox"/>	<input type="checkbox"/>	<input type="checkbox"/>
10.40 – 10.50				<input type="checkbox"/>	<input type="checkbox"/>	<input type="checkbox"/>	<input type="checkbox"/>

Source: Time use diary (German Time Use Survey 2001/2002).

**Figure 7: Question 135 personal questionnaire SOEP 2002**

135. In conclusion, we would like to ask you about your satisfaction with your life in general.

☞ Please answer according to the following scale:  
"0" means completely dissatisfied, "10" means completely satisfied.

How satisfied are you with your life, all things considered?

0  1  2  3  4  5  6  7  8  9  10  
 completely dissatisfied completely satisfied

Source: GSOEP Personenfragebogen 2002.

**Figure 8: Question 11 personal questionnaire SOEP 2002**

11. What does a typical weekday look like for you?  
How many hours per day do you spend on the following activities?

☞ Please give only whole hours.  
Use zero if the activity does not apply!

	Number of hours
Job, apprenticeship, second job (including travel time to and from work) .....	<input type="text"/> <input type="text"/>
Errands (shopping, trips to government agencies, etc.) .....	<input type="text"/> <input type="text"/>
Housework (washing, cooking, cleaning) .....	<input type="text"/> <input type="text"/>
Child care .....	<input type="text"/> <input type="text"/>
Care and support for persons in need of care .....	<input type="text"/> <input type="text"/>
Education or further training (also school, university) .....	<input type="text"/> <input type="text"/>
Repairs on and around the house, car repairs, garden work .....	<input type="text"/> <input type="text"/>
Hobbies and other free-time activities .....	<input type="text"/> <input type="text"/>

Source: GSOEP Personenfragebogen 2002.

**Table 4a: Distribution of net equivalence income**

Statistiken

Nettoäquivalenzeinkommen

N	Gültig	76439206
	Fehlend	0
	Mittelwert	1428,0586
	Median	1322,5806
	Standardabweichung	649,49038
	Varianz	421837,756
	Minimum	166,67
	Maximum	6000,00

Source: GTUS 2001/02, own calculations.

**Table 4b: Distribution of genuine leisure time**

Statistiken

Freizeit\_in\_min

N	Gültig	206026753
	Fehlend	0
	Mittelwert	329,4714
	Median	310,0000
	Standardabweichung	166,03069
	Varianz	27566,189
	Minimum	,00
	Maximum	1370,00

Source: GTUS 2001/02, own calculations.

The reforming of equation 8 more detailed:

$$6,418 = 3,550 \cdot (0,519 \cdot I^{0,297} + 0,481 \cdot L^{0,297})^{\frac{0,108}{-0,297}}$$

$$\Leftrightarrow 6,418 = 3,335 \cdot (0,519 \cdot I_i^{0,297} + 0,481 \cdot L_i^{0,297})^{0,364} \quad | \quad \sqrt[0,364]{\quad}$$

$$\Leftrightarrow 165,246 = 27,358 \cdot (0,519 \cdot I_i^{0,297} + 0,481 \cdot L_i^{0,297})$$

$$\Leftrightarrow 165,246 = 14,199 \cdot I_i^{0,297} + 13,159 \cdot L_i^{0,297}$$

$$\Leftrightarrow 13,159 \cdot L_i^{0,297} = 165,246 - 14,199 \cdot I_i^{0,297}$$

$$\Leftrightarrow L_i^{0,297} = 12,558 - 1,079 \cdot I_i^{0,297} \quad | \quad \left( \quad \right)^{\frac{1}{0,297}}$$

$$\Leftrightarrow L_i = \left( 12,558 - 1,079 \cdot I_i^{0,297} \right)^{\frac{1}{0,297}}$$



**Table 5: Determinants for the income-time-position –  
MNL-Estimation for working people with reference  
categoric income poverty (regime 1+2+4)**

	category I regime 3		category II regime 5		category III regime 6	
constant	-15,486	***	-17,414	***	-15,446	***
<b>personal characteristics</b>						
female	,625	*	,526		,108	
age	,016		,026		-,032	
Age <sup>2</sup> /100	-,076		-,085		-,025	
<b>education</b> (reference: no certificate)						
secondary scholl_II (Hauptschule)	-1,236		-1,305		-1,181	
secondary scholl_I (Realschule)	-1,680	**	-1,531	*	-1,432	*
high scholl diploma (without university degree)	-1,493	*	-1,406		-1,385	
university degree	-2,558	***	-2,327	**	-2,398	***
<b>occupational status</b> (reference: blue-collar w.)						
liberal professions	,052		,092		,341	
entrepreneur	,225		-,044		-,257	
civil servant	-,810		-,624		-,535	
white-collar worker	-,322		-,201		-,264	
other occupation group	-1,612	**	-1,897	***	-1,699	***
<b>weekly working hours</b> (reference: 41 or more)						
thru_20	1,626	***	1,785	***	2,271	***
21 to 25	1,601	**	2,395	***	2,920	***
26 to 35	,888	*	1,117	**	1,518	***
36 to 40	,764	**	1,222	***	1,562	***
<b>income situation</b>						
personal net income	,013	***	,015	***	,014	***
residual income	,013	***	,014	***	,014	***
<b>Nationality</b> (reference: German)						
foreigner	-1,926	***	-1,902	***	-1,747	**
<b>household structure</b> (reference: couple without kids)						
single person household	4,597	***	5,330	***	5,137	***
couple with one kid	-3,785	***	-4,562	***	-4,603	***
couple with two kids	-5,822	***	-7,297	***	-7,315	***
couple with three or more kids	-10,094	***	-12,767	***	-12,853	***
single parent with one kid	,188		-,245		-,252	
single parent with two kids	-2,740	***	-3,821	***	-3,987	***
other household structure	-4,910	***	-6,737	***	-6,747	***
<b>region</b> (reference: West Germany)						
East Germany	,638	**	,503		,021	
Degrees of Freedom	81		Cox and Snell	,352		
Prob. Value for LR	,000		Nagelkerke	,398		
n (observations)	7499		Mc Fadden	,201		

reference categorie: income poverty (regime 1 + 2 + 4)

Level of significance: \* 10%, \*\* 5%, \*\*\* 1%

Source: own estimation with GTUS 2001/02.

## References

- Andreß, H.-J. and G. Lipsmeier (1995), *Was gehört zum notwendigen Lebensstandard und wer kann ihn sich leisten? Ein neues Konzept der Armutsmessung*, in: *Aus Politik und Zeitgeschehen*, B31-32, 35-49.
- Atkinson, A.B. (2003), *Multidimensional Deprivation: Contrasting Social Welfare and Counting Approaches*, in: *Journal of Economic Inequality*, 1, 51-65.
- Bittman, M. (1999), *Social Participation and Family Welfare: The Money and Time Cost of Leisure*, SPRC Discussion Paper No. 95, Sydney.
- Bittman, M. and R.E. Goodin (1998), *An Equivalence Scale for Time*, SPRC Discussion Paper No. 85, Sydney.
- Bonke, J. and F. Gerstoft (2005), *Stress, Time Use and Gender*, in: *electronic Journal of Time Use Research*, Vol. 4, No. 1, 47-68.
- Bonke, J., Deding, M. and M. Lausten (2006), *Time and Money: Substitutes in Real Terms and Complements in Satisfaction*, The Levy Economics Institute, Economics Working Paper Archive wp\_451, Annandale-on-Hudson, New York.
- Bonke, J., Deding, M. and M. Lausten (2009), *Time and Money - A Simultaneous Analysis of Men's and Women's Domain Satisfaction*, in: *Journal of Happiness Studies*, 10, 113-131.
- Bourguignon, F. and S.R. Chakravarty (1999), *A Family of Multidimensional Poverty Measures*, in: Slotte, D.-J. (Ed.), *Essays in Honor of Camilo Dagum*, Physica Verlag, Heidelberg, 331-344.
- Bourguignon, F. and S.R. Chakravarty (2003), *The Measurement of Multidimensional Poverty*, in: *Journal of Economic Inequality* 1, 1, 25-49.
- Bundesregierung (2005), *Lebenslagen in Deutschland – Der zweite Armuts- und Reichtumsbericht der Bundesregierung*, Berlin.
- Bundesregierung (2008), *Lebenslagen in Deutschland – Der dritte Armuts- und Reichtumsbericht der Bundesregierung*, Berlin.
- Cappellari, L. and S.P. Jenkins (2007), *Summarising Multiple Deprivation Indicators*, in: Jenkins, S.P. and J. Micklewright (2007), *Inequality and Poverty Re-examined*, Oxford University Press, Oxford, 166-184.
- Clark, A.E. and A.J. Oswald (1996), *Satisfaction and Comparison Income*, in: *Journal of Public Economics*, 61, 359-381.
- Clark, A.E., Frijters, P. and M. Shields (2008), *Relative Income, Happiness and Utility: An Explanation for the Easterlin Paradox and Other Puzzles*, in: *Journal of Economic Literature*, 46, 95-144.
- Deutsch, J. and J.G. Silber (2005), *Measuring Multidimensional Poverty: An Empirical Comparison of Various Approaches*, in: *Review of Income and Wealth*, Vol. 51, No. 1, 145-174.
- Diamond, P.A. (1994), *On Time – Lectures on Models of Equilibrium*, Cambridge University Press, Cambridge.
- Fandel, Günter (2005), *Produktion I: Produktions- und Kostentheorie*, 6th Edition, Berlin.
- Foster, J., Greer, J. and E. Thorbecke (1984), *A Class of Decomposable Poverty Measures*, in: *Econometrica*, Vol. 52, No. 3, 761-766.

- Freeman, Richard (1978), *Job Satisfaction as an Economic Variable*, in: American Economic Review, Vol. 68, No. 2, 135-144.
- Frey, B.S. and A. Stutzer (2002), *What Can Economists Learn from Happiness Research?* in: Journal of Economic Literature, 40, 402-435.
- Frey, B.S. and A. Stutzer (2005), *Happiness Research: State and Prospects*, in: Review of Social Economy, Vol. LXII, No. 2, 207-228.
- Garhammer, M. (2002b), *Zeitwohlstand und Lebensqualität - ein interkultureller Vergleich*. In: Rinderspacher, J.P. (Hrsg.), *Zeitwohlstand. Ein Konzept für einen anderen Wohlstand der Nation*. Berlin, 165-205.
- Garhammer, Manfred (2002a), *Zeitarbeit - ein Muster für die Arbeits- und Betriebsorganisation der Zukunft?* In: Berl. J. Soziol., Heft 1 2002, Berlin, S. 109-126
- Greene, W. (2008), *Econometric Analysis*, 6th edition, Pearson Prentice Hall, Upper Saddle River, New Jersey, USA.
- Groh-Samberg, O. (2009), *Armut, soziale Ausgrenzung und Klassenstruktur – Zur Integration multidimensionaler und längsschnittlicher Perspektiven*, VS Verlag, Wiesbaden.
- Hagerty, M., Cummins, R., Ferries, A., Land, K., Michalos, A., Peterson, M., Sharpe, A., Sirgy, J. and J. Vogel (2002), *Quality of Life Indexes for National Policy: Review and Agenda for Research*, in: Social Indicator Research, 55, 1-96.
- Hamermesh, D.S. (2004), *Association Lecture Subjective Outcomes in Economics*, in: Southern Economic Journal, Vol. 71, No.1, 1-11.
- Hamermesh, D.S. and G.A. Pfann (2005), *The Economics of Time Use*, North-Holland.
- Harvey, A.S. and A.K. Mukhopadhyay (2007), *When Twenty-four Hours is Not Enough: Time Poverty of Working Parents*, in: Social Indicators Research, 82, 1, 57-77.
- Hauser, R. (1997), *Armutsberichterstattung*, in: Heinz-Herbert Noll (Hrsg.), *Sozialberichterstattung in Deutschland: Konzepte, Methoden und Ergebnisse für Lebensbereiche und Bevölkerungsgruppen*, Weinheim/München, 19-45.
- Hauser, R. (2008), *Das Maß der Armut: Armutsgrenzen im sozialstaatlichen Kontext: Der sozialstatistische Diskurs*, in: Huster, E.-U. et al. (Hrsg.), *Handbuch Armut und Soziale Ausgrenzung*, Wiesbaden.
- Hoff, A. (2002), *The Translog Approximation of the Constant Elasticity of Substitution Production Function with more than two Input Variables*, Working Paper 14/2002, Danish Research Institute of Food Economics.
- Hoff, A. (2004), *The linear Approximation of the CES Function with n Input Variables*, in: Marine Resource Economics, Volume 19, 295-306.
- Jenkins, S. and L. Osberg (2005), *Nobody to Play With? The Implications of Leisure Co-Ordination*, in: Hamermesh, D.S. and G.A. Pfann (Eds.), *The Economics of Time Use*, Elsevier B.V., 113-145.
- Kmenta, J. (1967), *On Estimation of the CES Production Function*, in: International Economic Review, Vol. 8, No. 2.
- Linder, St. (1970), *The Harried Leisure Class*, New York.
- Lugo, M.A. and E. Maasoumi (2008), *Multidimensional Poverty Measures from an Information Theory Perspective*, Paper Prepared for the 30th General Conference of The International Association for Research in Income and Wealth, Portoroz, Slovenia, August 24-30, 2008.

- Merz, J. (2002), *Time and Economic Well-Being – A Panelanalysis of Desired vs. Actual Working Hours*, in: *The Review of Income and Wealth*, 48/3, 317-346.
- Merz, J. (2008), *Hohe und niedrige Einkommen – Neue Ergebnisse zu Freien und anderen Berufen mit den Mikrodaten der Einkommensteuerstatistik*, in: Merz, J. (Hrsg.), *Freie Berufe – Einkommen und Steuern (FB€St) – Beiträge aus Wissenschaft und Praxis*, Schriftenreihe Band 16, Nomos Verlagsgesellschaft, Baden-Baden, 69-92.
- Merz, J. 2007, *Polarisierung der Einkommen von Selbständigen? – Zur Dynamik der Einkommensverteilung von Freiberuflern und Unternehmern*, in: Merz, J. (Ed.), *Fortschritte der MittelstandsForschung*, Merz, J., Schulte, R. and J. Wagner (Series Eds.), *Entrepreneurship, Professions, Small Business Economics*, CREPS-Schriftenreihe Vol. 3, Lit Verlag, Münster, 395-415.
- Merz, J. and L. Osberg (2009), *Keeping in Touch - A Benefit of Public Holidays Using Time Use Diary Data*, in: *electronic International Journal of Time Use Research* (in the referee process).
- Merz, J. and M. Zwick (2005) *Hohe Einkommen: Eine Verteilungsanalyse für Freie Berufe, Unternehmer und abhängig Beschäftigte mit Mikrodaten der Einkommensteuerstatistik*, in: *Schmollers Jahrbuch – Journal of Applied Social Science Studies*, Jg. 125/2, 269-298.
- Mückenberger, U. (2008), *Zeitpolitik in der Metropolregion Hamburg*, Projektantrag Wissenschaftliche Begleitung des Projektverbunds ‚Zeitpolitik in der Metropolregion Hamburg‘, Hamburg.
- Nolan, B. and V.T. Whelan (2007), *On the Multidimensionality of Poverty and Social Exclusion*, in: Jenkins, S.P. and J. Micklewright (2007), *Inequality and Poverty Re-examined*, Oxford University Press, Oxford, 146-165.
- Osberg, L. (2002), *Time, Money and Inequality in International Perspective*, Department of Economics, Manuscript, Dalhousie University, Halifax, Canada.
- Osberg, L. (Ed.) (2003b), *The Economic Implications of Social Cohesion*. University of Toronto Press, Toronto.
- Osberg, L. and K. Xu (2002), *On Sen’s Approach to Poverty Measures and Recent Developments*, Paper presented at the Sixth International Meeting of the International Association for Research of Income and Wealth, and *China Economic Quarterly* (published in Chinese) Vol. 1, No. 1, 151-170.
- Prahl, Hans-Werner (2002), *Soziologie der Freizeit*, Paderborn.
- Rhein, Thomas (2009), *„Working poor“ in Deutschland und den USA - Arbeit und Armut im transatlantischen Vergleich*, IAB Kurzbericht, in: *Aktuelle Analysen und Kommentare aus dem Institut für Arbeitsmarkt- und Berufsforschung* 1/2009, Nürnberg.
- Rode, J.C. (2004), *Job Satisfaction and Life Satisfaction revisited: A Longitudinal Test of an Integrated Model*, in: *Human Relations*, 57 (9), 1205-1230.
- Sen, A.K. (1976), *Poverty: An Ordinal Approach*, in: *Econometrica*, Vol. 44, No. 2, pp. 219 – 231
- Sen, A.K. (1985), *Commodities and Capabilities*, North-Holland, Amsterdam.
- Sen, A.K. (1999), *Development as Freedom*, Knopf Publishers, New York.
- Shorrocks, A. F. (1995), *Revisiting the Sen Poverty Index*, in: *Econometrica* 63 (5), S. 1225-1230
- Statistisches Bundesamt (Ed.) (2006a), *Compass 2001/02 Time Use Survey: Publications, Links and Prints incl. Data Files and Research Facilities*.

- Sullivan, O. (2007), *Cultural Voraciousness – A New Measure of the Pace of Leisure in a Context of 'Harriedness'*, in: electronic International Journal of Time Use Research 2007, Vol. 4, No. 1, 30-46.
- Thon, D. (1979), *On Measuring Poverty*, in: Review of Income and Wealth 25, S. 429-440
- Thursby, J.G. and C.A.K Lovell, (1978), *An Investigation of the Kmenta Approximation to the CES Function*, in: International Economic Review, Vol. 19, No. 2.
- Tsui, K. Y. (2002). *Multidimensional Poverty Indices*, in: Social Choice and Welfare, 19(1): 69-93.
- Vickery, C. (1977), *The Time-Poor: A New Look at Poverty*, in: Journal of Human Resources, 12, 1, 27-48.

# Forschungsinstitut Freie Berufe (FFB), Universität Lüneburg

## Publikationen

### 1 FFB-Jahresberichte

FFB-Jahresbericht 2007/08, FFB-Jahresbericht 2005/06, FFB-Jahresbericht 2003/04, FFB-Jahresbericht 2001/02, FFB-Jahresbericht 1999/00, FFB-Jahresbericht 1997/98, FFB-Jahresbericht 1996, FFB-Jahresbericht 1995, FFB-Jahresbericht 1994, FFB-Jahresbericht 1993, FFB-Jahresbericht 1992, FFB-Jahresbericht 1991, FFB: 10 Jahre Forschung und Lehre 1989-1999, FFB-Forschung und Lehre 1989-1998, FFB-Forschung und Lehre 1989-1997, FFB-Forschung und Lehre 1989-1996.

### 2 FFB-Bücher in der FFB-Schriftenreihe

- Merz, J. (Hrg.), 2008, Freie Berufe – Einkommen und Steuern (FB€St), FFB-Schriften Nr. 16, 301 Seiten, ISBN 978-3-8329-3210-7, NOMOS Verlagsgesellschaft, Baden-Baden. Preis: € 54,-
- Ackermann, D., 2006, Erfolgsfaktoren für Existenzgründung und Existenzsicherung freiberuflich tätiger Ärzte, FFB-Schriften Nr. 15, 399 Seiten, ISBN 3-8329-2060-9, NOMOS Verlagsgesellschaft, Baden-Baden. Preis: € 69,-
- Ehling, M. und J. Merz, 2003, Neue Technologien in der Umfrageforschung, FFB-Schriften Nr. 14, 181 Seiten, ISBN 3-7890-8241-4, NOMOS Verlagsgesellschaft, Baden-Baden. Preis: € 31,-
- Merz, J., 2003, Freie Berufe im Wandel der Märkte, FFB-Schriften Nr. 13, 168 Seiten, ISBN 3-7890-8107-8, NOMOS Verlagsgesellschaft, Baden-Baden. Preis: € 29,-
- Merz, J., 2001, Existenzgründung 2 – Erfolgsfaktoren und Rahmenbedingungen, FFB-Schriften Nr. 12, 232 Seiten, ISBN 3-7890-7462-4, NOMOS Verlagsgesellschaft, Baden-Baden. Preis: € 40,- / € 71,- (i. Vb. mit Band 1)
- Merz, J., 2001, Existenzgründung 1 – Tips, Training und Erfahrung, FFB-Schriften Nr. 11, 246 Seiten, ISBN 3-7890-7461-6, NOMOS Verlagsgesellschaft, Baden-Baden. Preis: € 40,- / € 71,- (i. Vb. mit Band 2)
- Merz, J. und M. Ehling, 1999, Time Use – Research, Data and Policy, FFB-Schriften Nr. 10, 571 Seiten, ISBN 3-7890-6244-8, NOMOS Verlagsgesellschaft, Baden-Baden. Preis: € 49,-
- Herrmann, H. und J. Backhaus, 1998, Staatlich gebundene Freiberufe im Wandel, FFB-Schriften Nr. 9, 234 Seiten, ISBN 3-7890-5319-8, NOMOS Verlagsgesellschaft, Baden-Baden. Preis: € 34,-
- Herrmann, H., 1996, Recht der Kammern und Verbände Freier Berufe, Europäischer Ländervergleich und USA, FFB-Schriften Nr. 8, 596 Seiten, ISBN 3-7890-4545-4, NOMOS Verlagsgesellschaft, Baden-Baden. Preis: € 56,-
- Merz, J., Rauberger, T. K. und A. Rönnau, 1994, Freie Berufe in Rheinland-Pfalz und in der Bundesrepublik Deutschland – Struktur, Entwicklung und wirtschaftliche Bedeutung, FFB-Schriften Nr. 7, 948 Seiten, ISBN 3-927816-27-2, Lüneburg. Preis: € 95,-
- Forschungsinstitut Freie Berufe (FFB) (Hrsg.), erstellt vom Zentrum zur Dokumentation für Naturheilverfahren e.V. (ZDN), 1992, 1993, Dokumentation der besonderen Therapierichtungen und natürlichen Heilweisen in Europa, Bd. I, 1. Halbband, 842 Seiten, Bd. I, 2. Halbband, 399 Seiten, Bd. II, 590 Seiten, Bd. III, 272 Seiten, Bd. IV, 419 Seiten, Bd. V, 1. Halbband, 706 Seiten, Bd. V, 2. Halbband, 620 Seiten, ISBN 3-88699-025-7, Lüneburg (nur zu beziehen über das Zentrum zur Dokumentation für Naturheilverfahren e.V. ZDN, Hufelandstraße 56, 45147 Essen, Tel.: 0201-74551). Preis: € 385,-
- Sahner, H. und A. Rönnau, 1991, Freie Heilberufe und Gesundheitsberufe in Deutschland, FFB-Schriften Nr. 6, 653 Seiten, ISBN 3-927816-11-6, Lüneburg. Preis: € 58,-
- Burmester, B., 1991, Ausbildungsvergleich von Sprachtherapeuten, FFB-Schriften Nr. 5, 54 Seiten, ISBN 3-927816-10-8, Lüneburg. Preis: € 9,-

- Sahner, H., 1991, Freie Berufe in der DDR und in den neuen Bundesländern, FFB-Schriften Nr. 4, 177 Seiten, ISBN 3-927816-09-4, Lüneburg. Preis: € 25,-
- Trautwein, H.-M., Donner, H., Semler, V. und J. Richter, 1991, Zur tariflichen Berücksichtigung der Ausbildung, der Bereitstellung von Spitzenlastreserven und der Absicherung von Beschäftigungsrisiken bei Seelotsen, mit dem Anhang Steuerliche Aspekte des tariflichen Normaleinkommens der Seelotsen, FFB-Schriften Nr. 3, 183 Seiten, ISBN 3-927816-07-8, Lüneburg. Preis: € 19,-
- Sahner, H. und F. Thiemann, 1990, Zukunft der Naturheilmittel in Europa in Gefahr? FFB-Schriften Nr. 2, 81 Seiten, ISBN 3-927816-06-X, Lüneburg. Preis: € 6,-
- Sahner, H., Herrmann, H., Rönnau, A. und H.-M. Trautwein, 1989, Zur Lage der Freien Berufe 1989, Teil III, FFB-Schriften Nr. 1, 167 Seiten, ISBN 3-927816-04-3, Lüneburg. Preis: € 25,-
- Sahner, H., Herrmann, H., Rönnau, A. und H.-M. Trautwein, 1989, Zur Lage der Freien Berufe 1989, Teil II, FFB-Schriften Nr. 1, 955 Seiten, ISBN 3-927816-02-7, Lüneburg.  
Preis: € 20,- / € 35,- (i. Vb. mit Teil I)
- Sahner, H., Herrmann, H., Rönnau, A. und H.-M. Trautwein, 1989, Zur Lage der Freien Berufe 1989, Teil I, FFB-Schriften Nr. 1, 426 Seiten, ISBN 3-927816-01-9, Lüneburg.  
Preis: € 20,- / € 35,- (i. Vb. mit Teil II)

### 3 FFB-Bücher

- Merz, J. (Hrg.), 2007, Fortschritte der MittelstandsForschung, Merz, J., Schulte, R. and J. Wagner (Series Eds.), Entrepreneurship, Professions, Small Business Economics, CREPS-Schriftenreihe Vol. 3, 520 Seiten, Lit Verlag, ISBN 3-8258-0265-3, Münster. Preis: € 34,90
- Zwick, M., 2007, Alternative Modelle zur Ausgestaltung von Gemeindesteuern, Statistisches Bundesamt - Statistik und Wissenschaft - Band 8, 307 Seiten, ISBN 978-3-8246-0791-4, Preis: € 24,80
- Zwick, M., J. Merz u.a., 2007, MITAX - Mikroanalysen und Steuerpolitik, Statistisches Bundesamt - Statistik und Wissenschaft - Band 7, 261 Seiten, ISBN 978-3-8246-0790-7, Preis: € 24,80
- Schulte, R. (Hrg.), 2005, Ergebnisse der MittelstandsForschung, Merz, J., Schulte, R. and J. Wagner (Series Eds.), Entrepreneurship, Professions, Small Business Economics, CREPS-Schriftenreihe Vol. 2, 432 Seiten, Lit Verlag, ISBN 3-8258-8916-5, Münster. Preis: € 34,90
- Merz, J., D. Hirschel und M. Zwick, 2005, Struktur und Verteilung hoher Einkommen - Mikroanalysen auf der Basis der Einkommensteuerstatistik, Lebenslagen in Deutschland, Der zweite Armuts- und Reichtumsbericht der Bundesregierung, Bundesministerium für Gesundheit und Soziale Sicherung, Berlin (<http://www.bmgs.bund.de/download/broschueren/A341.pdf>)
- Merz, J. und J. Wagner (Hrg.), 2004, Perspektiven der MittelstandsForschung – Ökonomische Analysen zu Selbständigkeit, Freien Berufen und KMU, Merz, J., Schulte, R. and J. Wagner (Series Eds.), Entrepreneurship, Professions, Small Business Economics, CREPS-Schriftenreihe Vol. 1, 520 Seiten, Lit Verlag, ISBN 3-8258-8179-2, Münster. Preis: € 39,90
- Merz, J. und M. Zwick (Hrg.), 2004, MIKAS – Mikroanalysen und amtliche Statistik, Statistisches Bundesamt (Serie Editor), Statistik und Wissenschaft, Vol. 1, 318 Seiten, ISBN 3-8246-0725-5, Wiesbaden. Preis: € 24,80
- Hirschel, D., 2004, Einkommensreichtum und seine Ursachen – Die Bestimmungsfaktoren hoher Arbeitseinkommen, Hochschulschriften Band 82, 416 Seiten, Metropolis-Verlag Marburg, ISBN 3-89518-441-1.
- Merz, J., 2001, Hohe Einkommen, ihre Struktur und Verteilung, Lebenslagen in Deutschland, Der erste Armuts- und Reichtumsbericht der Bundesregierung, Bundesministerium für Arbeit und Sozialordnung, 128 Seiten, Bonn, zu beziehen über: Bundesanzeiger Verlagsgesellschaft mbH, Südstraße 119, 53175 Bonn.
- Ehling, M. und J. Merz u. a., 2001, Zeitbudget in Deutschland – Erfahrungsberichte der Wissenschaft, Band 17 der Schriftenreihe Spektrum Bundesstatistik, 248 Seiten, Metzler-Poeschel Verlag, ISBN 3-8246-0645-3, Stuttgart. Preis: € 16,-

- Krickhahn, T., 1995, Die Verbände des wirtschaftlichen Mittelstands in Deutschland, 351 Seiten, DUV Deutscher Universitäts Verlag, ISBN 3-8244-0245-9, Wiesbaden. Preis: € 62,-
- Spahn, P. B., Galler, H. P., Kaiser, H., Kassella, T. und J. Merz, 1992, Mikrosimulation in der Steuerpolitik, 279 Seiten, Springer Verlag, ISBN 3-7908-0611-0, Berlin. Preis: € 45,-

#### 4 FFB-Reprints

- Merz, J., Kumulation von Mikrodaten – Konzeptionelle Grundlagen und ein Vorschlag zur Realisierung,; in: Allgemeines Statistisches Archiv, Issue 88, S. 451-472, 2004 FFB-Reprint Nr. 35
- Merz, J., Einkommens-Reichtum in Deutschland - Mikroanalytische Ergebnisse der Einkommensteuerstatistik für Selbständige und abhängig Beschäftigte, in: Perspektiven der Wirtschaftspolitik, Vol. 5, Issue 2, S. 105-126, 2004 FFB-Reprint Nr. 34
- Merz, J., Vorgrimler, D. und M. Zwick, Faktisch anonymisiertes Mikrodatenfile der Lohn- und Einkommensteuerstatistik 1998, in: Wirtschaft und Statistik, Issue 10, S. 1079-1091, 2004 FFB-Reprint Nr. 33
- Ackermann, D., Merz, J. and H. Stolze, Erfolg und Erfolgsfaktoren freiberuflich tätiger Ärzte – Ergebnisse der FFB-Ärzteumfrage für Niedersachsen, in: Merz, J. and J. Wagner (Eds.), Perspektiven der MittelstandsForschung – Ökonomische Analysen zu Selbständigkeit, Freien Berufen und KMU, Merz, J., Schulte, R. and J. Wagner (Series Eds.), Entrepreneurship, Professions, Small Business Economics, CREPS-Schriftenreihe Vol. 1, Lit Verlag, Münster, pp. 165-190, 2004 FFB-Reprint Nr. 32
- Hirschel, D. und J. Merz, Was erklärt hohe Arbeitseinkommen Selbständiger – Eine Mikroanalyse mit Daten des Sozioökonomischen Panels, in: Merz, J. and J. Wagner (Eds.), Perspektiven der MittelstandsForschung – Ökonomische Analysen zu Selbständigkeit, Freien Berufen und KMU, Merz, J., Schulte, R. and J. Wagner (Series Eds.), Entrepreneurship, Professions, Small Business Economics, CREPS-Schriftenreihe Vol. 1, Lit Verlag, Münster, pp. 265-285, 2004 FFB-Reprint Nr. 31
- Burgert, D. und J. Merz, Wer arbeitet wann? – Arbeitszeitarangements von Selbständigen und abhängig Beschäftigten: Eine mikroökonomische Analyse deutscher Zeitbudgetdaten, in: Merz, J. and J. Wagner (Eds.), Perspektiven der MittelstandsForschung – Ökonomische Analysen zu Selbständigkeit, Freien Berufen und KMU, Merz, J., Schulte, R. and J. Wagner (Series Eds.), Entrepreneurship, Professions, Small Business Economics, CREPS-Schriftenreihe Vol. 1, Lit Verlag, Münster, pp. 303-330, 2004 FFB-Reprint Nr. 30
- Merz, J. und M. Zwick, Hohe Einkommen – Eine Verteilungsanalyse für Freie Berufe, Unternehmer und abhängige Beschäftigte, in: Merz, J. and M. Zwick (Eds.), MIKAS – Mikroanalysen und amtliche Statistik, Statistik und Wissenschaft, Vol. 1, pp. 167-193, 2004 FFB-Reprint Nr. 29
- Merz, J., Schatz, C. and K. Kortmann, Mikrosimulation mit Verwaltungs- und Befragungsdaten am Beispiel ‚Altersvorsorge in Deutschland 1996‘ (AVID ,96), in: Merz, J. und M. Zwick (Hg.), MIKAS – Mikroanalysen und amtliche Statistik, Statistik und Wissenschaft, Vol. 1, S. 231-248, 2004 FFB-Reprint Nr. 28
- Merz, J., Was fehlt in der EVS ? – Eine Verteilungsanalyse hoher Einkommen mit der verknüpften Einkommensteuerstatistik für Selbständige und abhängig Beschäftigte, in: Jahrbücher für Nationalökonomie und Statistik, Vol. 223/1, p. 58-90, 2003 FFB-Reprint Nr. 27
- Merz, J. und M. Zwick, Verteilungswirkungen der Steuerreform 2000/2005 im Vergleich zum ‚Karlsruher Entwurf‘ – Auswirkungen auf die Einkommensverteilung bei Selbständigen (Freie Berufe, Unternehmer) und abhängig Beschäftigte, in: Wirtschaft und Statistik, 8/2002, p. 729-740, 2002 FFB-Reprint Nr. 26
- Merz, J. und M. Zwick, Verteilungswirkungen der Steuerreform 2000/2005 im Vergleich zum ‚Karlsruher Entwurf‘ – Auswirkungen auf die Einkommensverteilung bei Selbständigen (Freie Berufe, Unternehmer) und abhängig Beschäftigte, in: Wirtschaft und Statistik, 8/2002, S. 729-740, 2002, FFB-Reprint Nr. 25, Fachbereich Wirtschafts- und Sozialwissenschaften, Universität Lüneburg, Lüneburg. FFB-Reprint Nr. 25
- Merz, J., 2002, Time and Economic Well-Being – A Panel Analysis of Desired versus Actual Working Hours, in: Review of Income and Wealth, Series 48, No. 3, p. 317-346, FFB-Reprint Nr. 24, Department of Economics and Social Sciences, University of Lüneburg, Lüneburg. FFB-Reprint Nr. 24



- Schatz, Ch., Kortmann, K. und J. Merz, 2002, Künftige Alterseinkommen - Eine Mikrosimulationsstudie zur Entwicklung der Renten und Altersvorsorge in Deutschland (AVID'96), in: Schmollers Jahrbuch, Journal of Applied Social Sciences, Zeitschrift für Wirtschafts- und Sozialwissenschaften, 122. Jahrgang, Heft 2, S. 227-260, FFB-Reprint Nr. 23, Fachbereich Wirtschafts- und Sozialwissenschaften, Universität Lüneburg, Lüneburg. FFB-Reprint Nr. 23
- Merz, J. und M. Zwick, 2001, Über die Analyse hoher Einkommen mit der Einkommensteuerstatistik – Eine methodische Erläuterung zum Gutachten „Hohe Einkommen, ihre Struktur und Verteilung“ zum ersten Armuts- und Reichtumsbericht der Bundesregierung, in: Wirtschaft und Statistik 7/2001, S. 513-523, FFB-Reprint Nr. 22, Fachbereich Wirtschafts- und Sozialwissenschaften, Universität Lüneburg, Lüneburg. FFB-Reprint Nr. 22
- Merz, J., 2001, Was fehlt in der EVS? Eine Verknüpfung mit der Einkommensteuerstatistik für die Verteilungsanalyse hoher Einkommen, in: Becker, I., Ott, N. und G. Rolf (Hrsg.), Soziale Sicherung in einer dynamischen Gesellschaft, S. 278-300, Campus Verlag, Frankfurt/New York, FFB-Reprint Nr. 21, Fachbereich Wirtschafts- und Sozialwissenschaften, Universität Lüneburg, Lüneburg. FFB-Reprint Nr. 21
- Merz, J., 2001, 10 Jahre Forschungsinstitut Freie Berufe (FFB) der Universität Lüneburg – Forschungsschwerpunkte und Perspektiven, in: Bundesverband der Freien Berufe (Hrsg.), Jahrbuch 2000/2001, der freie beruf, S. 158-174, Bonn, FFB-Reprint Nr. 20, Fachbereich Wirtschafts- und Sozialwissenschaften, Universität Lüneburg, Lüneburg. FFB-Reprint Nr. 20
- Merz, J., 2000, The Distribution of Income of Self-employed, Entrepreneurs and Professions as Revealed from Micro Income Tax Statistics in Germany, in: Hauser, R. and I. Becker (eds.), The Personal Distribution of Income in an International Perspective, S. 99-128, Springer Verlag, Heidelberg, FFB-Reprint Nr.19, Department of Economics and Social Sciences, University of Lüneburg, Lüneburg. FFB-Reprint Nr. 19
- Merz, J., 1998, Privatisierung, Deregulierung und staatlich gebundene Freie Berufe – Einige ökonomische Aspekte, in: Herrmann, H. und J. Backhaus (Hrsg.), Staatlich gebundene Freiberufe im Wandel, S. 67-114, FFB-Schriften Nr. 9, NOMOS Verlagsgesellschaft, Baden-Baden, FFB-Reprint Nr. 18, Fachbereich Wirtschafts- und Sozialwissenschaften, Universität Lüneburg, Lüneburg. FFB-Reprint Nr. 18
- Merz, J., 1997, Die Freien Berufe – Laudatio zur Verleihung der Ehrendoktorwürde des Fachbereiches Wirtschafts- und Sozialwissenschaften der Universität Lüneburg an Prof. J. F. Volrad Deneke, in: Bundesverband der Freien Berufe (Hrsg.), Jahrbuch 1997, der freie beruf, S. 133-151, Bonn, FFB-Reprint Nr. 17, Fachbereich Wirtschafts- und Sozialwissenschaften, Universität Lüneburg, Lüneburg. FFB-Reprint Nr. 17
- de Kam, C. A., de Haan, J., Giles, C., Manresa, A., Berenguer, E., Calonge, S., Merz, J. and K. Venkatarama, 1996, Who pays the taxes? The Distribution of Effective Tax Burdens in Four EU Countries, in: *ec Tax Review*, p. 175-188, FFB-Reprint No. 16, Department of Economics and Social Sciences, University of Lüneburg, Lüneburg. FFB-Reprint Nr. 16
- Merz, J., 1996, MICSIM – A PC Microsimulation Model for Research and Teaching: A Brief View on its' Concept and Program Developments, *SoftStat '95 – Advances in Statistical Software 5*, in: Faulbaum, F. and W. Bandilla (eds.), Stuttgart, p. 433-442, FFB-Reprint No. 15, Department of Economics and Social Sciences, University of Lüneburg, Lüneburg. FFB-Reprint Nr. 15
- Burkhauser, R. V., Smeeding, T. M. and J. Merz, 1996, Relative Inequality and Poverty in Germany and the United States using Alternative Equivalence Scales, in: *Review of Income and Wealth, Series 42, No. 4*, p. 381-400, FFB-Reprint No. 14, Department of Economics and Social Sciences, University of Lüneburg, Lüneburg. FFB-Reprint Nr. 14
- Merz, J. 1996, Schattenwirtschaft und Arbeitsplatzbeschaffung, in: Sadowski, D. und K. Pull (Hrsg.), *Vorschläge jenseits der Lohnpolitik*, S. 266-294, Frankfurt/New York, FFB-Reprint Nr. 13, Fachbereich Wirtschafts- und Sozialwissenschaften, Universität Lüneburg, Lüneburg. FFB-Reprint Nr. 13
- Merz, J., 1996, MICSIM – Concept, Developments and Applications of a PC Microsimulation Model for Research and Teaching, in: Troitzsch, K. G., Mueller, U. Gilbert, G. N. and J. E. Doran (eds.), *Social Science Microsimulation*, p. 33-65, Berlin/New York, FFB-Reprint No. 12, Department of Economics and Social Sciences, University of Lüneburg, Lüneburg. FFB-Reprint Nr. 12

- Merz, J., 1996, Market and Non-Market Labour Supply and the Impact of the Recent German Tax Reform – Incorporating Behavioural Response, in: Harding, A. (ed.), *Microsimulation and Public Policy*, p. 177-202, Amsterdam/Tokyo, FFB-Reprint No. 11, Department of Economics and Social Sciences, University of Lüneburg, Lüneburg. FFB-Reprint Nr. 11
- Merz, J. und R. Lang, 1996, Alles eine Frage der Zeit!? – Bericht über ein FFB-Forschungsprojekt zum Thema 'Zeitverwendung in Erwerbstätigkeit und Haushaltsproduktion – Dynamische Mikroanalysen mit Paneldaten', in: *Uni Lüneburg – 50 Jahre Hochschule in Lüneburg, Jubiläums-Sonderausgabe*, Heft 19/Mai 1996, S. 51-55, FFB-Reprint Nr. 10, Fachbereich Wirtschafts- und Sozialwissenschaften, Universität Lüneburg, Lüneburg. FFB-Reprint Nr. 10
- Merz, J. und D. Kirsten, 1996, Freie Berufe im Mikrozensus – Struktur, Einkommen und Einkommensverteilung in den neuen und alten Bundesländern, in: BFB Bundesverband der Freien Berufe (Hrsg.), *Jahrbuch 1996*, S. 40-79, Bonn, FFB-Reprint Nr. 9, Fachbereich Wirtschafts- und Sozialwissenschaften, Universität Lüneburg, Lüneburg. FFB-Reprint Nr. 9
- Deneke, J. F. V., 1995, Freie Berufe – Gestern, Heute, Morgen, in: BFB Bundesverband der Freien Berufe (Hrsg.), *Jahrbuch 1995*, S. 57-72, Bonn, FFB-Reprint Nr. 8, Fachbereich Wirtschafts- und Sozialwissenschaften, Universität Lüneburg, Lüneburg. FFB-Reprint Nr. 8
- Merz, J. and J. Faik, 1995, Equivalence Scales Based on Revealed Preference Consumption Expenditures – The Case of Germany, in: *Jahrbücher für Nationalökonomie und Statistik*, Vol. 214, No. 4, p. 425-447, Stuttgart, FFB-Reprint No. 7, Department of Economics and Social Sciences, University of Lüneburg, Lüneburg. FFB-Reprint Nr. 7
- Merz, J., 1993, Statistik und Freie Berufe im Rahmen einer empirischen Wirtschafts- und Sozialforschung, in: BFB Bundesverband der Freien Berufe (Hrsg.), *Jahrbuch 1993*, S. 31-78, Bonn, FFB-Reprint Nr. 6, Fachbereich Wirtschafts- und Sozialwissenschaften, Universität Lüneburg, Lüneburg. FFB-Reprint Nr. 6
- Merz, J., 1993, Wandel in den Freien Berufen – Zum Forschungsbeitrag des Forschungsinstituts Freie Berufe (FFB) der Universität Lüneburg, in: BFB Bundesverband der Freien Berufe (Hrsg.), *Jahrbuch 1993*, S. 164-173, Bonn, FFB-Reprint Nr. 5, Fachbereich Wirtschafts- und Sozialwissenschaften, Universität Lüneburg, Lüneburg. FFB-Reprint Nr. 5
- Merz, J. and K. G. Wolff, 1993, The Shadow Economy: Illicit Work and Household Production: A Microanalysis of West Germany, in: *Review of Income and Wealth*, Vol. 39, No. 2, p. 177-194, FFB-Reprint No. 4, Department of Economics and Social Sciences, University of Lüneburg, Lüneburg. FFB-Reprint Nr. 4
- Trautwein, H.-M. und A. Rönnau, 1993, Self-Regulation of the Medical Profession in Germany: A Survey, in: Faure, M., Finsinger, J., Siegers, J. und R. van den Bergh (eds.), *Regulation of Profession*, p. 249-305, ISBN 90-6215-334-8, MAKLU, Antwerpen, FFB-Reprint No. 3, Department of Economics and Social Sciences, University of Lüneburg, Lüneburg. FFB-Reprint Nr. 3
- Herrmann, H., 1993, Regulation of Attorneys in Germany: Legal Framework and Actual Tendencies of Deregulation, in: Faure, M., Finsinger, J., Siegers, J. und R. van den Bergh (eds.), *Regulation of Profession*, p. 225-245, ISBN 90-6215-334-8, MAKLU, Antwerpen, FFB-Reprint No. 2, Department of Economics and Social Sciences, University of Lüneburg, Lüneburg. FFB-Reprint Nr. 2
- Merz, J., 1991, Microsimulation – A Survey of Principles, Developments and Applications, in: *International Journal of Forecasting* 7, p. 77-104, ISBN 0169-2070-91, North-Holland, Amsterdam, FFB-Reprint Nr. 1, Department of Economics and Social Sciences, University of Lüneburg, Lüneburg. FFB-Reprint Nr. 1

## **5 FFB-Diskussionspapiere, ISSN 0942-2595**

- Merz, J., Rathjen, T., 2009, Time and Income Poverty – An Interdependent Multidimensional Poverty Approach with German Time Use Diary Data, FFB-Discussionpaper No. 79, Fakultät II, Wirtschafts- Verhaltens- und Rechtswissenschaften, Leuphana Universität Lüneburg, Lüneburg. FFB-DP Nr.79

- Merz, J., 2009, Time Use and Time Budgets – Improvements, Future Challenges and Recommendations, FFB-Discussionpaper No. 78, Fakultät II, Wirtschafts- Verhaltens- und Rechtswissenschaften, Leuphana Universität Lüneburg, Lüneburg. FFB-DP Nr.78
- Merz, J., Hanglberger, D., Rucha, R., 2009, The Timing of Daily Demand for Goods and Services – Multivariate Probit Estimates and Microsimulation Results for an Aged Population with German Time Use Diary Data, FFB-Discussionpaper No. 77, Fakultät II, Wirtschafts- Verhaltens- und Rechtswissenschaften, Leuphana Universität Lüneburg, Lüneburg. FFB-DP Nr.77
- Merz, J., 2009, Zeitverwendungsforschung und Mediennutzung, FFB-Diskussionspapier Nr. 76, Fakultät II, Wirtschafts- Verhaltens- und Rechtswissenschaften, Leuphana Universität Lüneburg, Lüneburg. FFB-DP Nr.76
- Böhm, P. und J. Merz, 2008, Reichtum in Niedersachsen und anderen Bundesländern – Ergebnisse aus der Steuer-Geschäftsstatistik 2003 für Selbständige (Freie Berufe und Unternehmer) und abhängig Beschäftigte, FFB-Diskussionspapier Nr. 75, Fakultät II, Wirtschafts-, Verhaltens- und Rechtswissenschaften, Universität Lüneburg, Lüneburg. FFB-DP Nr. 75
- Merz, J. und M. Zwick, 2008, Einkommens- und Verteilungsanalysen mit dem Taxpayer-Panel – Neue Möglichkeiten und erste Ergebnisse für Selbständige als Freiberufler und Unternehmer und abhängig Beschäftigte sowie für hohe Einkommen, FFB-Diskussionspapier Nr. 74, Fakultät II, Wirtschafts-, Verhaltens- und Rechtswissenschaften, Universität Lüneburg, Lüneburg. FFB-DP Nr. 74
- Böhm, P. und J. Merz, 2008, Zum Einkommensreichtum Älterer in Deutschland – Neue Reichtumskennzahlen und Ergebnisse aus der Lohn- und Einkommenssteuerstatistik (FAST 2001), FFB-Diskussionspapier Nr. 73, Fakultät II, Wirtschafts-, Verhaltens- und Rechtswissenschaften, Universität Lüneburg, Lüneburg. FFB-DP Nr. 73
- Herrmann, H., 2007, Freie Berufe – Europäische Entwicklungen, FFB-Diskussionspapier Nr. 72, Fakultät II, Wirtschafts-, Verhaltens- und Rechtswissenschaften, Universität Lüneburg, Lüneburg. FFB-DP Nr. 72
- Volrad, J.F.D., 2007, Freie Berufe – Herausforderungen an die Wissenschaft, FFB-Diskussionspapier Nr. 71, Fakultät II, Wirtschafts-, Verhaltens- und Rechtswissenschaften, Universität Lüneburg, Lüneburg. FFB-DP Nr. 71
- Merz, J., Böhm, P., Hanglberger, D., Stolze, H. und R. Rucha, 2007, Wann werden Serviceleistungen nachgefragt? Eine Wirkungsanalyse anhand des neuen FFB-Mikrosimulationsmodells ServSim, FFB-Diskussionspapier Nr. 70, Fakultät II, Wirtschafts-, Verhaltens- und Rechtswissenschaften, Universität Lüneburg, Lüneburg. FFB-DP Nr. 70
- Stolze H., 2007, Die Nachfrage nach Gesundheitsleistungen - Ergebnisse der FFB-Patientenumfrage, FFB-Diskussionspapier Nr. 69, Fakultät II, Wirtschafts-, Verhaltens- und Rechtswissenschaften, Universität Lüneburg, Lüneburg. FFB-DP Nr. 69
- Burgert, D., 2006, Betriebliche Weiterbildung und Verbleib Älterer im Betrieb, FFB-Diskussionspapier Nr. 68, Fakultät II, Wirtschafts-, Verhaltens- und Rechtswissenschaften, Universität Lüneburg, Lüneburg. FFB-DP Nr. 68
- Merz, J., 2006, Polarisierung der Einkommen von Selbständigen? – Zur Dynamik der Einkommensverteilung von Freiberuflern und Unternehmern, FFB-Diskussionspapier Nr. 67, Fakultät II, Wirtschafts-, Verhaltens- und Rechtswissenschaften, Universität Lüneburg, Lüneburg. FFB-DP Nr. 67
- Paic, P., 2006, Informationelle Zugänge für die empirische Untersuchung freiberuflicher Existenzgründungen, FFB-Diskussionspapier Nr. 66, Fakultät II, Wirtschafts-, Verhaltens- und Rechtswissenschaften, Universität Lüneburg, Lüneburg. FFB-DP Nr. 66
- Merz, J. und M. Zwick, 2006, Einkommensanalysen mit Steuerdaten – Mikroanalysen zu hohen Einkommen und Selbständigkeit und Mikrosimulation zu Politikalternativen der Einkommen-, Körperschaft- und Gewerbesteuer, FFB-Diskussionspapier Nr. 65, Fakultät II, Wirtschafts-, Verhaltens- und Rechtswissenschaften, Universität Lüneburg, Lüneburg. FFB-DP Nr. 65

- Merz, J., Stolze, H. und M. Zwick, 2006, Wirkungen alternativer Steuerreformmodelle auf die Einkommensverteilung von Freien und anderen Berufen, FFB-Diskussionspapier Nr. 64, Fakultät II, Wirtschafts-, Verhaltens- und Rechtswissenschaften, Universität Lüneburg, Lüneburg. FFB-DP Nr. 64
- Zwick, M., 2006, Gemeindefinanzreform und Freie Berufe, FFB-Diskussionspapier Nr. 63, Fakultät II, Wirtschafts-, Verhaltens- und Rechtswissenschaften, Universität Lüneburg, Lüneburg. FFB-DP Nr. 63
- Burgert, D., 2006, Kündigungsschutz – Ein Hindernis für das Beschäftigungswachstum? FFB-Diskussionspapier Nr. 62, Fakultät II, Wirtschafts-, Verhaltens- und Rechtswissenschaften, Universität Lüneburg, Lüneburg. FFB-DP Nr. 62
- Paic, P., 2006, Existenzgründung und Einkommen Freier Berufe – Ergebnisse aus dem Sozio-ökonomischen Panel und der FFB-Onlineumfrage Freie Berufe, FFB-Diskussionspapier Nr. 61, Fakultät II, Wirtschafts-, Verhaltens- und Rechtswissenschaften, Universität Lüneburg, Lüneburg. FFB-DP Nr. 61
- Merz, J. und P. Böhm, 2006, Arbeitszeit und Einkommen – Neue Ergebnisse aus der deutschen Zeitbudgeterhebung, FFB-Diskussionspapier Nr. 60, Fakultät II, Wirtschafts-, Verhaltens- und Rechtswissenschaften, Universität Lüneburg, Lüneburg. FFB-DP Nr. 60
- Merz, J., 2006, Hohe und niedrige Einkommen – Neue Ergebnisse zu Freien und anderen Berufen aus dem Armuts- und Reichtumsbericht der Bundesregierung, FFB-Diskussionspapier Nr. 59, Fakultät II, Wirtschafts-, Verhaltens- und Rechtswissenschaften, Universität Lüneburg, Lüneburg. FFB-DP Nr. 59
- Merz, J., Daniel Vorgrimler und Markus Zwick, 2006, De facto Anonymised Microdata File on Income Tax Statistics 1998, FFB-Diskussionspapier Nr. 58, Fakultät II, Wirtschafts-, Verhaltens- und Rechtswissenschaften, Universität Lüneburg, Lüneburg. FFB-DP Nr. 58
- Merz, J. and L. Osberg, 2006, Keeping in Touch – A Benefit of Public Holidays. FFB-Diskussionspapier Nr. 57, Fakultät II, Wirtschafts-, Verhaltens- und Rechtswissenschaften, Universität Lüneburg, Lüneburg. FFB-DP Nr. 57
- Merz, J. und P. Paic, 2006, Start-up success of freelancers – New microeconomic evidence from the German Socio-Economic Panel. FFB-Diskussionspapier Nr. 56, Fakultät II, Wirtschafts-, Verhaltens- und Rechtswissenschaften, Universität Lüneburg, Lüneburg. FFB-DP Nr. 56
- Merz, J. und P. Paic, 2006, Erfolgsfaktoren freiberuflicher Existenzgründung – Neue mikroökonomische Ergebnisse mit Daten des Sozio-ökonomischen Panels, FFB-Diskussionspapier Nr. 55, Fakultät II, Wirtschafts-, Verhaltens- und Rechtswissenschaften, Universität Lüneburg, Lüneburg. FFB-DP Nr. 55
- Merz, J. und H., Stolze, 2006, Representative Time Use Data and Calibration of the American Time Use Studies 1965-1999, FFB-Diskussionspapier Nr. 54, Fakultät II, Wirtschafts-, Verhaltens- und Rechtswissenschaften, Universität Lüneburg, Lüneburg. FFB-DP Nr. 54
- Paic, P. und H. Brand, 2005, Die Freien Berufe im Sozio-ökonomischen Panel - Systematische Berichtigung der kritischen Wechsel innerhalb der Selbständigengruppe, FFB-Diskussionspapier Nr. 53, Fachbereich Wirtschafts- und Sozialwissenschaften, Universität Lüneburg, Lüneburg. FFB-DP Nr. 53
- Merz, J. und P. Paic, 2005, Zum Einkommen der Freien Berufe – Eine Ordered Probit-Analyse ihrer Determinanten auf Basis der FFB-Onlineumfrage, FFB-Diskussionspapier Nr. 52, Fachbereich Wirtschafts- und Sozialwissenschaften, Universität Lüneburg, Lüneburg. FFB-DP Nr. 52
- Burgert, D., 2005, Schwellenwerte im deutschen Kündigungsschutzrecht – Ein Beschäftigungshindernis für kleine Unternehmen?, FFB-Diskussionspapier Nr. 51, Fachbereich Wirtschafts- und Sozialwissenschaften, Universität Lüneburg, Lüneburg. FFB-DP Nr. 51
- Merz, J., Böhm, P. und D. Burgert, 2005, Arbeitszeitarrangements und Einkommensverteilung – Ein Treatment Effects Ansatz der Einkommenschätzung für Unternehmer, Freiberufler und abhängig Beschäftigte, FFB-Diskussionspapier Nr. 50, Fachbereich Wirtschafts- und Sozialwissenschaften, Universität Lüneburg, Lüneburg. FFB-DP Nr. 50
- Burgert, D., 2005, The Impact of German Job Protection Legislation on Job Creation in Small Establishments – An Application of the Regression Discontinuity Design, FFB-Diskussionspapier Nr. 49, Fachbereich Wirtschafts- und Sozialwissenschaften, Universität Lüneburg, Lüneburg. FFB-DP Nr. 49

- Merz, J. und D. Burgert, 2005, Arbeitszeitarrangements – Neue Ergebnisse aus der nationalen Zeitbudgeterhebung 2001/02 im Zeitvergleich, FFB-Diskussionspapier Nr. 48, Fachbereich Wirtschafts- und Sozialwissenschaften, Universität Lüneburg, Lüneburg. FFB-DP Nr. 48
- Merz, J., Böhm, P. und D. Burgert, 2005, Timing, Fragmentation of Work and Income Inequality – An Earnings Treatment Effects Approach, FFB-Diskussionspapier Nr. 47, Fachbereich Wirtschafts- und Sozialwissenschaften, Universität Lüneburg, Lüneburg. FFB-DP Nr. 47
- Merz, J. und P. Paic, 2004, Existenzgründungen von Freiberuflern und Unternehmer – Eine Mikroanalyse mit dem Sozio-ökonomischen Panel FFB-Diskussionspapier Nr. 46, Fachbereich Wirtschafts- und Sozialwissenschaften, Universität Lüneburg, Lüneburg. FFB-DP Nr. 46
- Merz, J. und D. Burgert, 2004, Wer arbeitet wann? Arbeitszeitarrangements von Selbständigen und abhängig Beschäftigten – Eine mikroökonomische Analyse deutscher Zeitbudgetdaten, FFB-Diskussionspapier Nr. 45, Fachbereich Wirtschafts- und Sozialwissenschaften, Universität Lüneburg, Lüneburg. FFB-DP Nr. 45
- Hirschel, D. und J. Merz, 2004, Was erklärt hohe Arbeitseinkommen der Selbständigen – Eine Mikroanalyse mit Daten des Sozio-ökonomischen Panels, FFB-Diskussionspapier Nr. 44, Fachbereich Wirtschafts- und Sozialwissenschaften, Universität Lüneburg, Lüneburg. FFB-DP Nr. 44
- Ackermann, D., Merz, J. und H. Stolze, 2004, Erfolg und Erfolgsfaktoren freiberuflich tätiger Ärzte – Ergebnisse der FFB-Ärztebefragung für Niedersachsen, FFB-Diskussionspapier Nr. 43, Fachbereich Wirtschafts- und Sozialwissenschaften, Universität Lüneburg, Lüneburg. FFB-DP Nr. 43
- Hirschel, D. 2003, Do high incomes reflect individual performance? The determinants of high incomes in Germany, FFB-Diskussionspapier Nr. 42, Department of Economics and Social Sciences, University of Lüneburg, Lüneburg. FFB-DP Nr. 42
- Merz, J., and D. Burgert, 2003, Working Hour Arrangements and Working Hours – A Microeconomic Analysis Based on German Time Diary Data, FFB-Diskussionspapier Nr. 41, Department of Economics and Social Sciences, University of Lüneburg, Lüneburg. FFB-DP Nr. 41
- Merz, J. und M. Zwick, 2002, Hohe Einkommen: Eine Verteilungsanalyse für Freie Berufe, Unternehmer und abhängig Beschäftigte, Eine Mikroanalyse auf der Basis der Einkommensteuerstatistik, FFB-Diskussionspapier Nr. 40, Fachbereich Wirtschafts- und Sozialwissenschaften, Universität Lüneburg, Lüneburg. FFB-DP Nr. 40
- Merz, J. and D. Hirschel, 2003, The distribution and re-distribution of income of self-employed as freelancers and entrepreneurs in Europe, FFB-Diskussionspapier Nr. 39, Department of Economics and Social Sciences, University of Lüneburg, Lüneburg. FFB-DP Nr. 39
- Stolze, H. 2002, Datenbankgestützte Internetpräsenzen – Entwicklung und Realisation am Beispiel der Homepage des Forschungsinstituts Freie Berufe (FFB) der Universität Lüneburg <http://ffb.uni-lueneburg.de>, FFB-Diskussionspapier Nr. 38, Fachbereich Wirtschafts- und Sozialwissenschaften, Universität Lüneburg, Lüneburg. FFB-DP Nr. 38
- Merz, J., 2002, Zur Kumulation von Haushaltsstichproben, FFB-Diskussionspapier Nr. 37, Fachbereich Wirtschafts- und Sozialwissenschaften, Universität Lüneburg, Lüneburg. FFB-DP Nr. 37
- Merz, J., 2002, Reichtum in Deutschland: Hohe Einkommen, ihre Struktur und Verteilung – Eine Mikroanalyse mit der Einkommensteuerstatistik für Selbständige und abhängig Beschäftigte, FFB-Diskussionspapier Nr. 36, Fachbereich Wirtschafts- und Sozialwissenschaften, Universität Lüneburg, Lüneburg. FFB-DP Nr. 36
- Merz, J. und M. Zwick, 2002, Verteilungswirkungen der Steuerreform 2000/2005 im Vergleich zum ,Karlsruher Entwurf Auswirkungen auf die Einkommensverteilung bei Selbständigen (Freie Berufe, Unternehmer und abhängig Beschäftigte), FFB-Diskussionspapier Nr. 35, Fachbereich Wirtschafts- und Sozialwissenschaften, Universität Lüneburg, Lüneburg. FFB-DP Nr. 35
- Merz, J., Stolze, H. und M. Zwick, 2002, Professions, entrepreneurs, employees and the new German tax (cut) reform 2000 – A MICSIM microsimulation analysis of distributional impacts, FFB-Diskussionspapier Nr. 34, Department of Economics and Social Sciences, University of Lüneburg, Lüneburg. FFB-DP Nr. 34

- Forschungsinstitut Freie Berufe, 2002, Freie Berufe im Wandel der Märkte - 10 Jahre Forschungsinstitut Freie Berufe (FFB) der Universität Lüneburg, Empfang am 4. November 1999 im Rathaus zu Lüneburg, FFB-Diskussionspapier Nr. 33, Fachbereich Wirtschafts- und Sozialwissenschaften, Universität Lüneburg, Lüneburg. FFB-DP Nr. 33
- Merz, J., 2002, Time Use Research and Time Use Data – Actual Topics and New Frontiers, FFB-Discussion Paper No. 32, Department of Economics and Social Sciences, University of Lüneburg, Lüneburg. FFB-DP Nr. 32
- Merz, J., 2001, Freie Berufe im Wandel der Arbeitsmärkte, FFB-Diskussionspapier Nr. 31, Fachbereich Wirtschafts- und Sozialwissenschaften, Universität Lüneburg, Lüneburg. FFB-DP Nr. 31
- Merz, J., 2001, Was fehlt in der EVS? Eine Verteilungsanalyse hoher Einkommen mit der verknüpften Einkommensteuerstatistik für Selbständige und abhängig Beschäftigte, FFB-Diskussionspapier Nr. 30, Fachbereich Wirtschafts- und Sozialwissenschaften, Universität Lüneburg, Lüneburg. FFB-DP Nr. 30
- Merz, J., 2001, Informationsfeld Zeitverwendung – Expertise für die Kommission zur Verbesserung der informationellen Infrastruktur zwischen Wissenschaft und Statistik, FFB-Diskussionspapier Nr. 29, Fachbereich Wirtschafts- und Sozialwissenschaften, Universität Lüneburg, Lüneburg. FFB-DP Nr. 29
- Schatz, C. und J. Merz, 2000, Die Rentenreform in der Diskussion – Ein Mikrosimulationsmodell für die Altersvorsorge in Deutschland (AVID-PTO), FFB-Diskussionspapier Nr. 28, Fachbereich Wirtschafts- und Sozialwissenschaften, Universität Lüneburg, Lüneburg. FFB-DP Nr. 28
- Merz, J., 2000, The Distribution of Income of Self-employed, Entrepreneurs and Professions as Revealed from Micro Income Tax Statistics in Germany, FFB-Discussion Paper No. 27, Department of Economics and Social Sciences, University of Lüneburg, Lüneburg. FFB-DP Nr. 27
- Merz, J., Loest, O. und A. Simon, 1999, Existenzgründung – Wie werde ich selbständig, wie werde ich Freiberufler? Ein Leitfaden, FFB-Diskussionspapier Nr. 26, Fachbereich Wirtschafts- und Sozialwissenschaften, Universität Lüneburg, Lüneburg. FFB-DP Nr. 26
- Merz, J. und D. Kirsten, 1998, Extended Income Inequality and Poverty Dynamics of Labour Market and Valued Household Activities – A Ten Years Panelanalysis for Professions, Entrepreneurs and Employees in Germany, FFB-Discussion Paper No. 25, Department of Economics and Social Sciences, University of Lüneburg, Lüneburg. FFB-DP Nr. 25
- Merz, J., Quiel, T. und K. Venkatarama, 1998, Wer bezahlt die Steuern? – Eine Untersuchung der Steuerbelastung und der Einkommenssituation für Freie und andere Berufe, FFB-Diskussionspapier Nr. 24, Fachbereich Wirtschafts- und Sozialwissenschaften, Universität Lüneburg, Lüneburg. FFB-DP Nr. 24
- Merz, J. und R. Lang, 1997, Preferred vs. Actual Working Hours – A Ten Paneleconometric Analysis for Professions, Entrepreneurs and Employees in Germany, FFB-Discussion Paper No. 23, Department of Economics and Social Sciences, University of Lüneburg, Lüneburg. FFB-DP Nr. 23
- Merz, J., 1997, Privatisierung und Deregulierung und Freie und staatlich gebundene Freie Berufe – Einige ökonomische Aspekte, FFB-Diskussionspapier Nr. 22, Fachbereich Wirtschafts- und Sozialwissenschaften, Universität Lüneburg, Lüneburg. FFB-DP Nr. 22
- de Kam, C. A., de Haan, J., Giles, C., Manresa, A., Berenguer, E., Calonge, S., Merz, J. and K. Venkatarama, 1996, The Distribution of Effective Tax Burdens in Four EU Countries, FFB-Discussion Paper No. 21, Department of Economics and Social Sciences, University of Lüneburg, Lüneburg. FFB-DP Nr. 21
- Deneke, J. F. V., 1996, Freie Berufe und Mittelstand – Festrede zur Verleihung der Ehrendoktorwürde, FFB-Diskussionspapier Nr. 20, Fachbereich Wirtschafts- und Sozialwissenschaften, Universität Lüneburg, Lüneburg. FFB-DP Nr. 20
- Merz, J., 1996, Die Freien Berufe – Laudatio zur Verleihung der Ehrendoktorwürde des Fachbereiches Wirtschafts- und Sozialwissenschaften der Universität Lüneburg an Prof. J. F. Volrad Deneke, FFB-Diskussionspapier Nr. 19, Fachbereich Wirtschafts- und Sozialwissenschaften, Universität Lüneburg, Lüneburg. FFB-DP Nr. 19

- de Kam, C. A., de Haan, J., Giles, C., Manresa, A., Berenguer, E., Calonge, S. and J. Merz, 1996, Who pays the taxes?, FFB-Discussion Paper No. 18, Department of Economics and Social Sciences, University of Lüneburg, Lüneburg. FFB-DP Nr. 18
- Merz, J., 1996, Schattenwirtschaft und ihre Bedeutung für den Arbeitsmarkt, FFB-Diskussionspapier Nr. 17, Fachbereich Wirtschafts- und Sozialwissenschaften, Universität Lüneburg, Lüneburg. FFB-DP Nr. 17
- Merz, J. und D. Kirsten, 1995, Freie Berufe im Mikrozensus II – Einkommen und Einkommensverteilung anhand der ersten Ergebnisse für die neuen und alten Bundesländer 1991, FFB-Diskussionspapier Nr. 16, Fachbereich Wirtschafts- und Sozialwissenschaften, Universität Lüneburg, Lüneburg. FFB-DP Nr. 16
- Merz, J. und D. Kirsten, 1995, Freie Berufe im Mikrozensus I – Struktur und quantitative Bedeutung anhand der ersten Ergebnisse für die neuen und alten Bundesländer 1991, FFB-Diskussionspapier Nr. 15, Fachbereich Wirtschafts- und Sozialwissenschaften, Universität Lüneburg, Lüneburg. FFB-DP Nr. 15
- Merz, J., 1995, MICSIM – Concept, Developments and Applications of a PC-Microsimulation Model for Research and Teaching, FFB-Discussion Paper No. 14, Department of Economics and Social Sciences, University of Lüneburg, Lüneburg. FFB-DP Nr. 14
- Rönnau, A., 1995, Freie Berufe in der DDR, der Bundesrepublik Deutschland und im wiedervereinten Deutschland: Auswertungen von Berufstätigenerhebung und Arbeitsstättenzählung, FFB-Diskussionspapier Nr. 13, Fachbereich Wirtschafts- und Sozialwissenschaften, Universität Lüneburg, Lüneburg. FFB-DP Nr. 13
- Burkhauser, R. V., Smeeding, T. M. and J. Merz, 1994, Relative Inequality and Poverty in Germany and the United States Using Alternative Equivalence Scales, FFB-Discussion Paper No. 12, Department of Economics and Social Sciences, University of Lüneburg, Lüneburg. FFB-DP Nr. 12
- Widmaier, U., Niggemann, H. and J. Merz, 1994, What makes the Difference between Unsuccessful and Successful Firms in the German Mechanical Engineering Industry? A Microsimulation Approach Using Data from the NIFA-Panel, FFB-Discussion Paper No. 11, Department of Economics and Social Sciences, University of Lüneburg, Lüneburg. FFB-DP Nr. 11
- Merz, J., 1994, Microdata Adjustment by the Minimum Information Loss Principle, FFB-Discussion Paper No. 10, Department of Economics and Social Sciences, University of Lüneburg, Lüneburg. FFB-DP Nr. 10
- Merz, J., 1994, Microsimulation – A Survey of Methods and Applications for Analyzing Economic and Social Policy, FFB-Discussion Paper No. 9, Department of Economics and Social Sciences, University of Lüneburg, Lüneburg. FFB-DP Nr. 9
- Merz, J., Garner, T., Smeeding, T. M., Faik, J. and D. Johnson, 1994, Two Scales, One Methodology – Expenditure Based Equivalence Scales for the United States and Germany, FFB-Discussion Paper No. 8, Department of Economics and Social Sciences, University of Lüneburg, Lüneburg. FFB-DP Nr. 8
- Krickhahn, T., 1993, Lobbyismus und Mittelstand: Zur Identifikation der Interessenverbände des Mittelstands in der Bundesrepublik Deutschland, FFB-Diskussionspapier Nr. 7, Fachbereich Wirtschafts- und Sozialwissenschaften, Universität Lüneburg, Lüneburg. FFB-DP Nr. 7
- Merz, J., 1993, Market and Non-Market Labor Supply and Recent German Tax Reform Impacts – Behavioral Response in a Combined Dynamic and Static Microsimulation Model, FFB-Discussion Paper No. 6, Department of Economics and Social Sciences, University of Lüneburg, Lüneburg. FFB-DP Nr. 6
- Merz, J., 1993, Microsimulation as an Instrument to Evaluate Economic and Social Programmes, FFB-Discussion Paper No. 5, Department of Economics and Social Sciences, University of Lüneburg, Lüneburg. FFB-DP Nr. 5
- Merz, J., 1993, Statistik und Freie Berufe im Rahmen einer empirischen Wirtschafts- und Sozialforschung, Antrittsvorlesung im Fachbereich Wirtschafts- und Sozialwissenschaften der Universität Lüneburg, FFB-Diskussionspapier Nr. 4, Fachbereich Wirtschafts- und Sozialwissenschaften, Universität Lüneburg, Lüneburg. FFB-DP Nr. 4
- Merz, J. and J. Faik, 1992, Equivalence Scales Based on Revealed Preference Consumption Expenditure Microdata – The Case of West Germany, FFB-Discussion Paper No. 3, Department of Economics and Social Sciences, University of Lüneburg, Lüneburg. FFB-DP Nr. 3

Merz, J., 1992, Time Use Dynamics in Paid Work and Household Activities of Married Women – A Panel Analysis with Household Information and Regional Labour Demand, FFB-Discussion Paper No. 2, Department of Economics and Social Sciences, University of Lüneburg, Lüneburg. FFB-DP Nr. 2

Forschungsinstitut Freie Berufe, 1992, Festliche Einweihung des Forschungsinstituts Freie Berufe am 16. Dezember 1991 im Rathaus zu Lüneburg, FFB-Diskussionspapier Nr. 1, Fachbereich Wirtschafts- und Sozialwissenschaften, Universität Lüneburg, Lüneburg. FFB-DP Nr. 1

## **6 FFB-Dokumentationen, ISSN 1615-0376**

Merz, J., Hillebrecht, H., Rucha, R., Schlüter, H. und H. Stolze, 2006, e-learning für das Fach Statistik – Ein Pilotprojekt an der Universität Lüneburg, FFB-Dokumentation Nr. 14, Fachbereich Wirtschafts- und Sozialwissenschaften, Universität Lüneburg, Lüneburg. FFB-Dok. Nr. 14

Merz, J. und H. Stolze, 2006, Adjust for Windows Version 1.1 – A Software Package to Achieve Representative Microdata by the Minimum Information Loss Principle, Program Manual, FFB-Dokumentation Nr. 13, Fakultät Wirtschafts-, Verhaltens- und Rechtswissenschaften, Universität Lüneburg, Lüneburg FFB-Dok. Nr. 13

Merz, J. und P. Paic, 2005, Die FFB-Onlineumfrage Freie Berufe – Beschreibung und Hochrechnung, FFB-Dokumentation Nr. 12, Fakultät Wirtschafts-, Verhaltens- und Rechtswissenschaften, Universität Lüneburg, Lüneburg FFB-Dok. Nr. 12

Stolze, H., 2004, Der FFB-Server mit Microsoft Windows Server 2003, FFB-Dokumentation Nr. 11, Fachbereich Wirtschafts- und Sozialwissenschaften, Universität Lüneburg, Lüneburg. FFB-Dok. Nr. 11

Stolze, H., 2004, Zur Repräsentativität der FFB-Ärzteumfrage – Neue Hochrechnungen für Niedersachsen, Nordrhein und Deutschland, FFB-Dokumentation Nr. 10, Fachbereich Wirtschafts- und Sozialwissenschaften, Universität Lüneburg, Lüneburg. FFB-Dok. Nr. 10

Merz, J., Stolze, H. und S. Imme, 2001, ADJUST FOR WINDOWS – A Program Package to Adjust Microdata by the Minimum Information Loss Principle, Program-Manual, FFB-Dokumentation No. 9, Department of Economics and Social Sciences, University of Lüneburg, Lüneburg. FFB-Dok. Nr. 9

Merz, J., Fink, F., Plönnigs, F. und T. Seewald, 1999, Forschungsnetz Zeitverwendung – Research Network on Time Use (RNTU), FFB-Dokumentation Nr. 8, Fachbereich Wirtschafts- und Sozialwissenschaften, Universität Lüneburg, Lüneburg. FFB-Dok. Nr. 8

Merz, J., 1997, Zeitverwendung in Erwerbstätigkeit und Haushaltsproduktion – Dynamische Mikroanalysen mit Paneldaten, DFG-Endbericht, FFB-Dokumentation Nr. 7, Fachbereich Wirtschafts- und Sozialwissenschaften, Universität Lüneburg, Lüneburg. FFB-Dok. Nr. 7

Merz, J. und F. Plönnigs, 1997, DISTRI/MICSIM – A Softwaretool for Microsimulation Models and Analyses of Distribution, FFB-Dokumentation No. 6, Department of Economics and Social Sciences, University of Lüneburg, Lüneburg. FFB-Dok. Nr. 6

Merz, J. und R. Lang, 1997, Neue Hochrechnung der Freien Berufe und Selbständigen im Sozio-ökonomischen Panel, FFB-Dokumentation Nr. 5, Fachbereich Wirtschafts- und Sozialwissenschaften, Universität Lüneburg, Lüneburg. FFB-Dok. Nr. 5

Merz, J. und F. Plönnigs, 1995, Forschungsinstitut Freie Berufe – Datenschutz und Datensicherung, FFB-Dokumentation Nr. 4, Fachbereich Wirtschafts- und Sozialwissenschaften, Universität Lüneburg, Lüneburg. FFB-Dok. Nr. 4

Merz, J., Hecker, M., Matusall, V. und H. Wiese, 1994, Forschungsinstitut Freie Berufe – EDV-Handbuch, FFB-Dokumentation Nr. 3, Fachbereich Wirtschafts- und Sozialwissenschaften, Universität Lüneburg, Lüneburg. FFB-Dok. Nr. 3

Merz, J., 1993, Zeitverwendung in Erwerbstätigkeit und Haushaltsproduktion – Dynamische Mikroanalysen mit Paneldaten, DFG-Zwischenbericht für die erste Phase (1992-1993), FFB-Dokumentation Nr. 2, Fachbereich Wirtschafts- und Sozialwissenschaften, Universität Lüneburg, Lüneburg. FFB-Dok. Nr. 2



Merz, J., 1993, ADJUST – Ein Programmpaket zur Hochrechnung von Mikrodaten nach dem Prinzip des minimalen Informationsverlustes, Programm-Handbuch, FFB-Dokumentation Nr. 1, Fachbereich Wirtschafts- und Sozialwissenschaften, Universität Lüneburg, Lüneburg. FFB-Dok. Nr. 1

Available also in English as:

Merz, J., 1994, ADJUST – A Program Package to Adjust Microdata by the Minimum Information Loss Principle, Program-Manual, FFB-Dokumentation No. 1e, Department of Economics and Social Sciences, University of Lüneburg, Lüneburg. FFB-Dok. Nr. 1e

## **7 Sonstige Arbeitsberichte, ISSN 0175-7275**

Matusall, V., Kremers, H. und G. Behling, 1992, Umweltdatenbanken – vom Konzept zum Schema, Arbeitsbericht Nr. 112, Universität Lüneburg, Lüneburg. Mikrosimulation in der Steuerpolitik, 279 Seiten, Springer Verlag, ISBN 3-7908-0611-0, Berlin. Preis: € 6,-

Rönnau, A., 1989, Freie Berufe in Niedersachsen – Numerische und wirtschaftliche Entwicklung; Bedeutung als Arbeitgeber, Arbeitsbericht Nr. 60, Universität Lüneburg, Lüneburg. Mikrosimulation in der Steuerpolitik, 279 Seiten, Springer Verlag Berlin, ISBN 3-7908-0611-0, Berlin. Preis: € 6,-

Sahner, H., 1989, Freie Berufe im Wandel, Arbeitsbericht Nr. 59, Universität Lüneburg, Lüneburg. Mikrosimulation in der Steuerpolitik, 279 Seiten, Springer Verlag, ISBN 3-7908-0611-0, Berlin. Preis: € 6,-

Sahner, H., 1988, Die Interessenverbände in der Bundesrepublik Deutschland – Ein Klassifikationssystem zu ihrer Erfassung, Arbeitsbericht Nr. 41, Universität Lüneburg, Lüneburg. Mikrosimulation in der Steuerpolitik, 279 Seiten, Springer Verlag, ISBN 3-7908-0611-0, Berlin. Preis: € 6,-

FFB-Jahresberichte und FFB-Reprints werden auf Anfrage kostenlos zugesandt.

FFB-Diskussionspapiere und FFB-Dokumentationen können über unsere FFB-Homepage kostenlos heruntergeladen werden.

Die FFB-Bücher können sowohl bei uns als auch beim NOMOS Verlag bestellt werden. Sonstige Arbeitsberichte und Sonstige Bücher sind über den jeweiligen Autor zu beziehen.

<http://ffb.uni-lueneburg.de>